

Huntington, History.

1921

RL

(1921)

# HUNTINGTON, WEST VIRGINIA



AZEL MEADOWS  
THE REAL ESTATE MAN  
HUNTINGTON, WEST VIRGINIA

1921

"A BOOK OF REMEMBRANCE"

PRICE \$1.00

CABELL COUNTY PUBLIC LIBRARY  
455 - 9TH STREET PLAZA  
HUNTINGTON, WEST VIRGINIA 25701

RL

616,9754 - Sh -

Checked in Shetler's Guide to Study of WVA

p. 4 - Item 41.

FLASHES OF THE "HUNTINGTON SPIRIT"

They found a lot of courage that  
simmered in the sun;  
They blended it with patience and  
just a spice of fun;  
They poured in hope and laughter:  
then with a sudden twist  
They stirred it all together and  
made an Optimist.

\* \* \*

It is better to take things as they  
come than to miss them as they go.

\* \* \*

Business building is more impor-  
tant than business getting. You  
can get the business by selling him  
something he does not need, but  
you can build business only by  
finding out what a man needs, and  
selling him that.

\* \* \*

"You are beaten to earth? Well, what's that?  
Come up with a smiling face—  
It's nothing against you to fall down flat,  
But to lie there—that's disgrace.  
The harder you're thrown, why the higher you bounce;  
Be proud of your blackened eye!  
It isn't the fact that you're licked that counts,  
It's how did you fight—and why?"

THE HUNTINGTON SPIRIT

May 7 1921

RL

BRIEF FACTS  
For the Busy Executive

Compiled for the  
HUNTINGTON (W. VA.) CHAMBER OF COMMERCE  
By R. F. ADAMS

Huntington, W. Va.,  
1921.

CABELL COUNTY PUBLIC LIBRARY	
CLASS <i>Rh</i> 975.4421	BOOK <i>A</i>
ACCESSION <i>C.P.1</i>	

WESTERN COUNTIES PUBLIC LIBRARY  
HUNTINGTON, WEST VIRGINIA

## INDEX.

Articles Manufactured Here.....	11	Intention of This Booklet .....	3
Aeronautics .....	32	Industries Now Here, Classes of .....	6
Amusements .....	44	Industrial Population.....	19
Bonus .....	19	Jobbing Trade .....	12
Bank Deposits and Clearings .....	21	Locate Your Plant Here, Why You Should .....	5
Building Operations .....	26	Labor Situation .....	9
Building During 1920, Extent of.....	27	Labor Supply, Nationality of.....	9
Building, Cost of.....	27	Law Enforcement .....	22
Business Education .....	39	Library .....	33
Coal, How Far From.....	8	Move Your Family Here, Why You Should.....	5
Coal Production, Amount of Available .....	8	Market House .....	47
Coal Distribution .....	8	Market, Retail .....	47
Coal, Freight Rate on .....	9	Opportunity .....	60
Coal Fields, Extent of Contiguous .....	9	Passenger Service .....	28
Coal Fields, Map of .....	30-31	Pleasure Craft on the River.....	11
County Roads .....	29	Population of City .....	19
Churches .....	29	Post Office Receipts .....	21
Colleges .....	34	Police Protection .....	22
Conventions, Entertaining .....	42	Public Schools .....	37
Clubs .....	46	Parks .....	43
Country Clubs .....	46	Questionnaire Form, Why this Booklet is Issued in .....	3
Cost of Living .....	48	River, The Ohio .....	13
Climate .....	53	Raw Materials Close at Hand.....	16
Death Rate .....	25	Raw Material, Importing .....	15
Depression, How it Affected Huntington.....	10	Railroad Traffic .....	15
Distribution Point, This City as a .....	12	Rain and Snow .....	55
Distance from Large Trading Centers.....	15	Shippers, How We Help .....	18
Electric Power .....	19	Streets and Alleys .....	24
Friendly Spirit, A .....	Inside Back Cover	Streets, Clean .....	24
Factory Sites .....	7	Streets, Wide .....	24
Fuel, Our Available .....	7	Sanitary Conditions .....	25
Factories, Number of.....	11	Sewerage .....	25
Factories, List of .....	58-59	School Advantages, Other .....	39
Ferries .....	14	Transportation by Rail and Water .....	15
Freight and Express Tonnage .....	18	Timber, Proximity to .....	16
Fire Protection .....	23	Tax Rate .....	21
Fire Department, Efficiency of .....	23	Tax Rates Compared .....	21
Fires Can't Spread .....	24	Transportation System, Local Passenger .....	28
Frost .....	57	Transportation System, Population Served by.....	28
Growth of City .....	21	Teaching Force in Public Schools.....	39
Gas Fields, Map of .....	30-31	Theatre Seating Capacity .....	44
Golf .....	45	Temperature .....	55
Government, Form of.....	22	Unemployment .....	10
Housing Conditions .....	25	Uplift Work Among Young People .....	33
Hotel Accommodations .....	41	Valuation, Assessed .....	21
Home Sites, Country .....	49	Wages .....	9
Hospitals .....	51	Workingmen are Thrifty .....	10
Huntington Spirit, The .....	Inside Front Cover	Water Supply .....	22
		Yard and Freight House Facilities .....	17

## BRIEF FACTS FOR THE BUSY EXECUTIVE

---

HRL

..... 3  
..... 6  
..... 19  
..... 12  
ld ..... 5  
..... 9  
..... 9  
..... 22  
..... 33  
ld ..... 5  
..... 47  
..... 47  
..... 60  
..... 28  
..... 11  
..... 19  
..... 21  
..... 22  
..... 37  
..... 43  
s Issued in 3  
..... 13  
..... 16  
..... 15  
..... 15  
..... 55  
..... 18  
..... 24  
..... 24  
..... 24  
..... 25  
..... 25  
..... 39  
..... 15  
..... 16  
..... 21  
..... 21  
r ..... 28  
rved by..... 28  
..... 39  
..... 44  
..... 55  
..... 10  
..... 33  
..... 21  
..... 9  
..... 10  
..... 22  
..... 17

### For Whose Benefit ?

There are two particular classes of people for whose benefit this booklet is intended. First, the individual who is looking for a good place to establish his home and raise his children; second, the factory man, who, for reasons best known to himself, is contemplating a change of location or the establishment of a new plant. Information valuable to both is contained within these covers.

### Facts Boiled Down

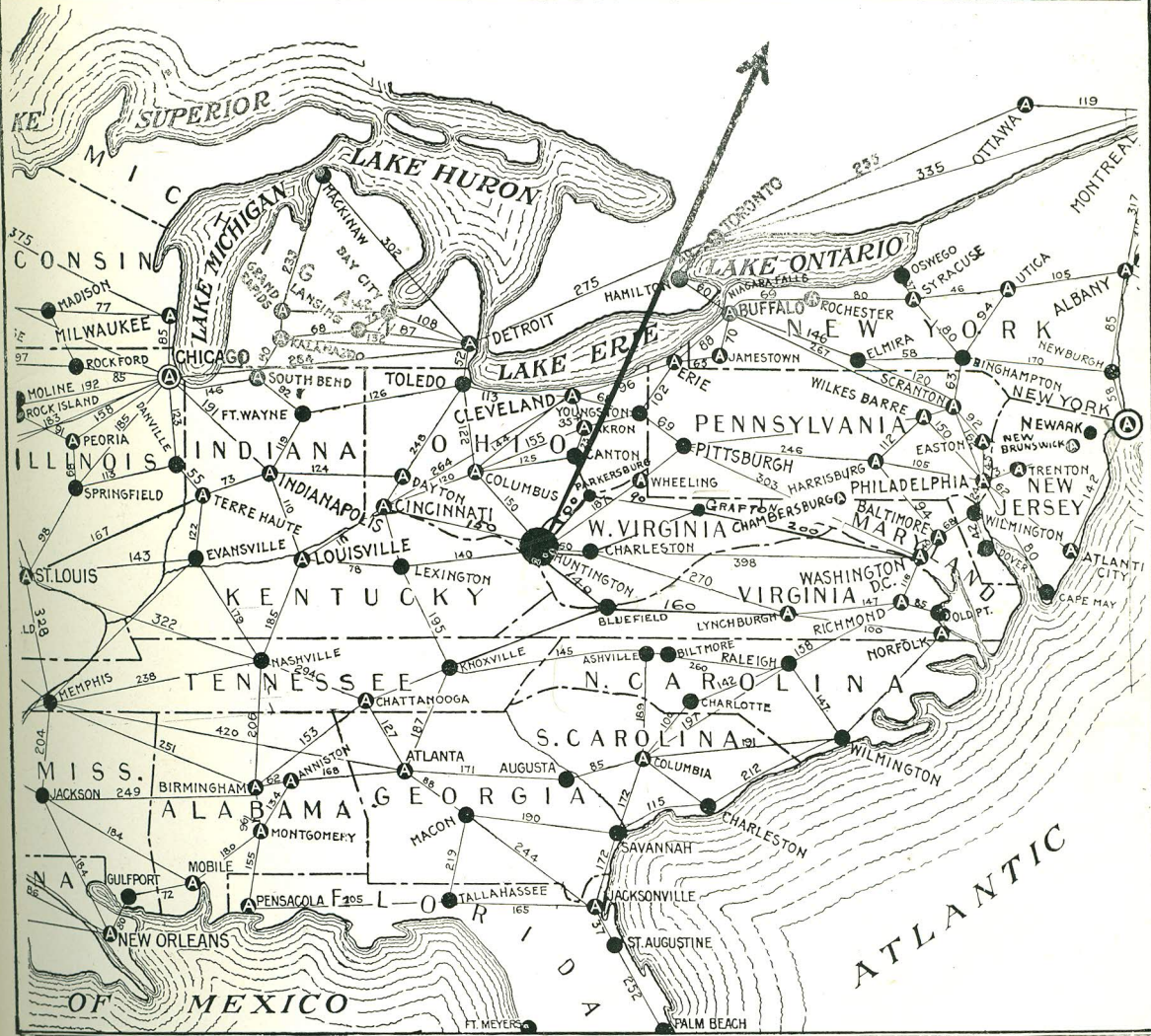
For the reason that the executive is usually a very busy man, we have endeavored to boil down this narrative to essential facts, to cut out all useless verbiage, and give only such information as will enable the reader to see with his mind's eye the very real advantages of locating in Huntington.

### Your Question Quickly Answered

The "question and answer" style has been used in this booklet with the view of saving time for the reader. Glance down the list of subjects, or the questions printed in black face type, and find those in which you are particularly interested. Note also that while this questionnaire does not pretend to enter into minute details bearing upon individual problems in every line of business activity it does enable you to find quickly the answers which Huntington offers to many questions pertaining to your business. Should perchance the point which peculiarly interests you be not treated herein a brief word to the Chamber of Commerce of Huntington will bring immediate response.

HOW TO MAKE A GOOD MOVE

MAP UNITED STATES AND HUNTINGTON



HUNTINGTON IS CENTRALLY LOCATED

Why  
Should  
I  
Move?

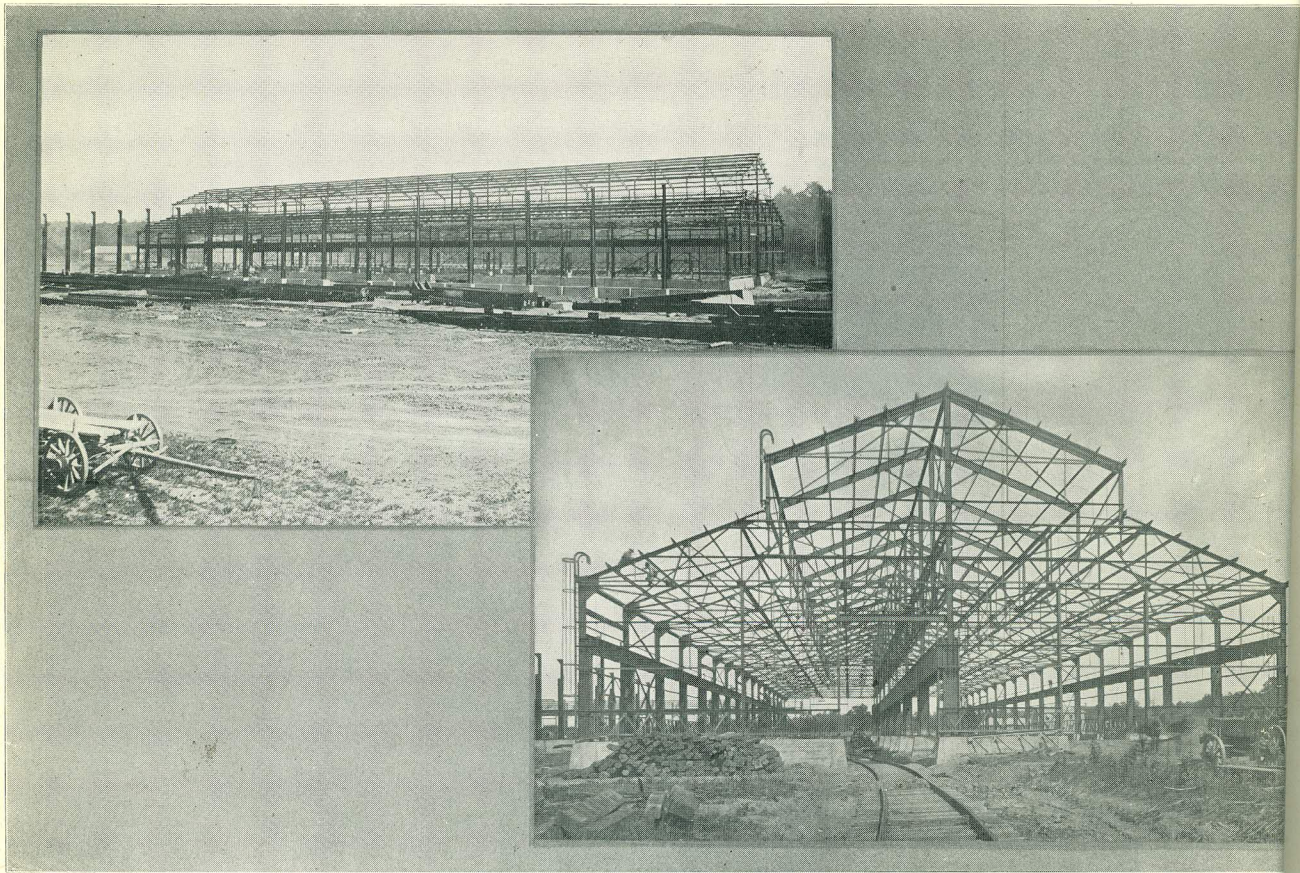
**WHY SHOULD I ESTABLISH MY PLANT IN HUNTINGTON ?**

Because Huntington is well and conveniently located with regard to raw materials and markets, has adequate transportation facilities, offers a good supply of contented labor.

**WHY SHOULD I MOVE MY FAMILY TO HUNTINGTON ?**

The advantages of raising a family in Huntington cannot be overstated. Live churches, fine schools, clean government, good moral and social surroundings, friendly people, all combine to produce a situation which is entirely favorable to the most satisfactory family relations.

## THEY ALL LIKE HUNTINGTON



CONSTRUCTION WORK AT THE NEW NICKEL PLANT

Industries  
are  
Varied

### WHAT ARE YOUR GENERAL CLASSES OF INDUSTRIES?

The list of classes is almost as extensive as the list of factories. Our industries are perhaps more varied than those of any city of this size in the nation. Included are woodworking plants, manufacturers of glass, flour, steel rails, railroad cars, chinaware, mine cars, dyes and chemicals, thermos bottles, besides extensive tobacco market and many other lines. A large plant of The International Nickel Company, (which will manufacture monel metal,) is now under construction, and this plant will, when completed employ approximately 3,000 men.



HUNTINGTON'S TOBACCO MARKET

## PLENTY OF ROOM—PLENTY OF CHEAP FUEL

### Factory Sites

#### IS THERE GOOD ACREAGE FOR FACTORY SITES ?

Huntington is located in a wide plateau some ten miles long and a mile and a half wide, with a level acreage of probably fifteen square miles, with hundreds of acres of available ground located contiguous to the city (and reachable by rail).

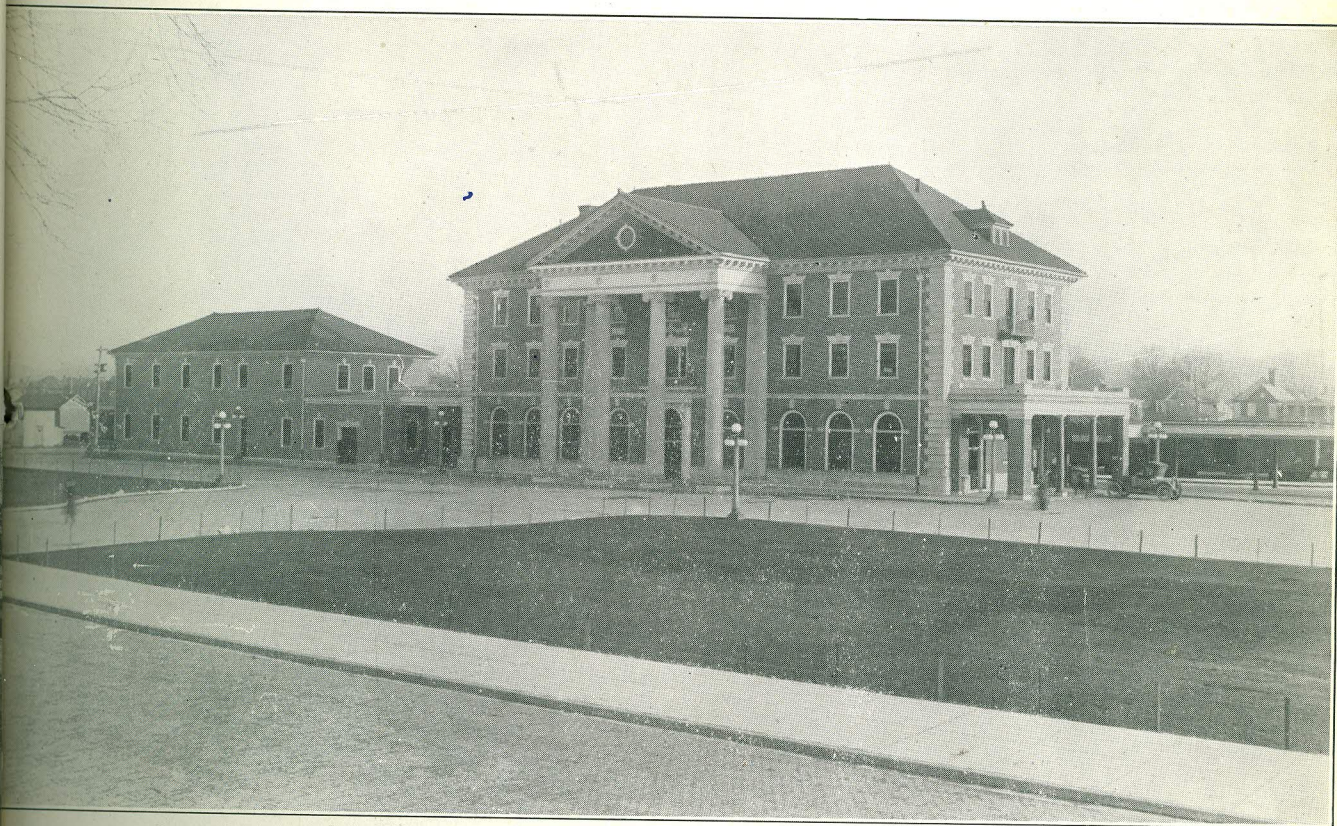
### Fuel

#### WHAT KIND OF FUEL IS AVAILABLE ?

The fuel situation in Huntington is supremely satisfactory, the city being located in a position of commanding importance with reference to this necessary item. We are within a short distance of the largest and finest coal fields of the world, in fact surrounded practically on all sides by coal and other minerals. Coal is thus quickly and easily procurable for those who prefer it, while for those who would rather have other fuel, natural gas is available in plenty at low rates. The city is on the edge of one of the greatest gas belts in the world. Gas is sold for manufacturing purposes as low as 15 cents per thousand feet. Gas mains reach Huntington and supply her from half a dozen different directions. Gas may give out some day, but in case this does happen it will give out later, much later, in Huntington than in other places because this city is right on the edge of such a large gas area. Electric current is available in plenty at very low rates for those who require it.

### INDUSTRIES ?

Industries. Our industries are second to none in the nation. Included are automobile, railroad cars, chinaware, tobacco market and many others. The Cigarette Company, (which will be a great plant will, when com-



CHESAPEAKE AND OHIO R. R. PASSENGER STATION



## MILLIONS OF TONS OF COAL PASS THROUGH HUNTINGTON ANNUALLY

How  
Far  
To  
Coal?

### HOW FAR ARE YOU FROM THE COAL SOURCES OF SUPPLY ?

This city is by rail 50 miles from the Logan field, 96 miles from the New River field, 135 miles from the Elkhorn field and 140 miles from the Pocahontas field. Other fields in close proximity to this city are the Consolidated, Winding Gulf, Denton, Kanawha, Beaver Creek and Coal River. (See double page insert map.)

Coal  
Production

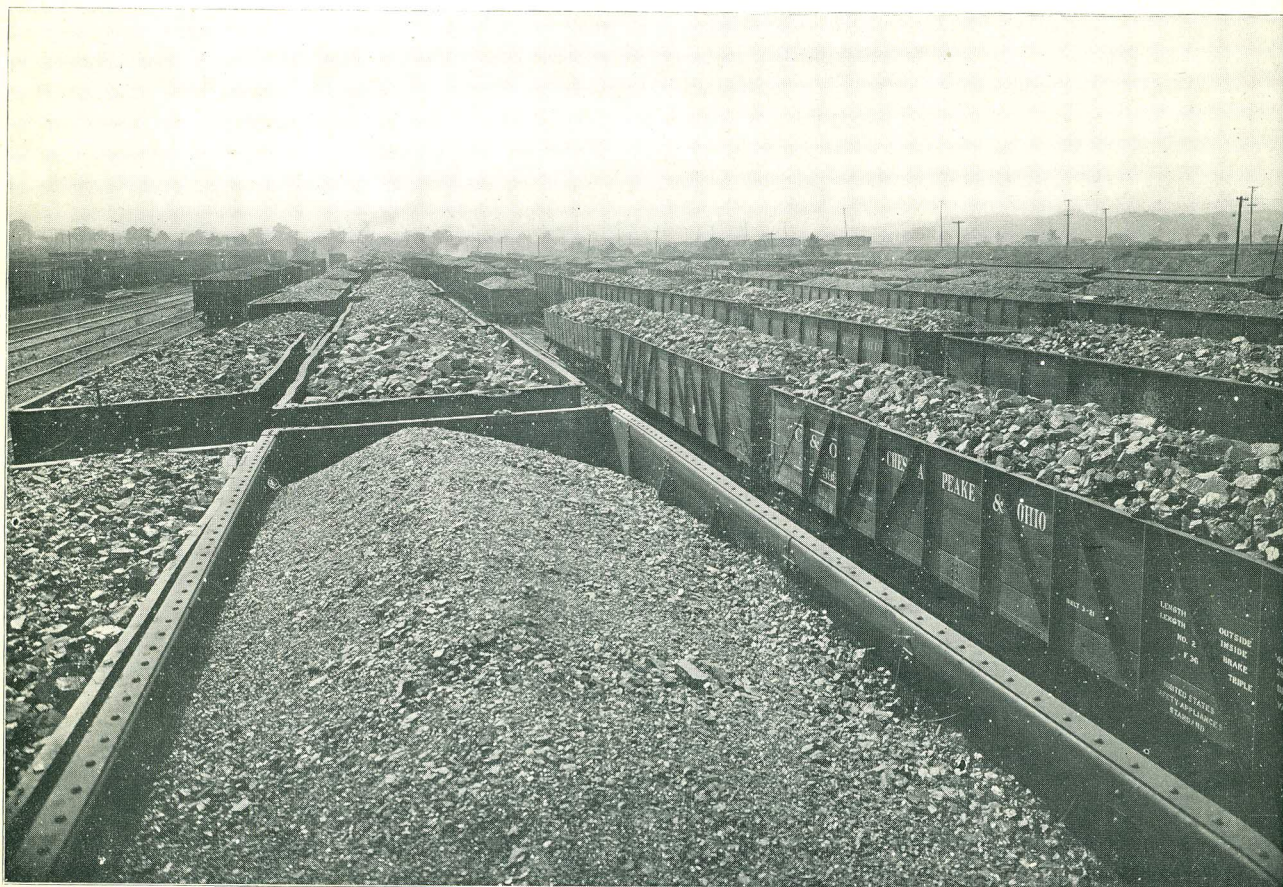
### WHAT DOES THE AVAILABLE COAL PRODUCTION AMOUNT TO ?

The annual production of coal within a radius of sixty miles of the city on last year amounted to some 15,000,000 tons. If all the factories east of the Mississippi river were located in Huntington they could not in 500 years consume the available coal in mines now being operated.

Coal  
Distribution

### IS THE COAL INDUSTRY WELL REPRESENTED IN YOUR CITY ?

Yes, very largely. Approximately sixty coal companies maintain offices here, with large organizations, and many distributing agencies are also located within our municipality.



WEST VIRGINIA COAL ON C. & O. SIDING ENROUTE TO ITS DESTINATION

ANNUALLY

## AN "ALL-AMERICAN" POPULATION

Freight  
Rate

### WHAT ARE FREIGHT RATES ON COAL INTO HUNTINGTON ?

\$1.26 per ton.

Extent  
Of  
Coal  
Fields

### ARE YOUR CONTIGUOUS COAL FIELDS VERY EXTENSIVE ?

Quite so. In the Logan field alone, some 50 miles from the city, there are more than 130 operations. See map in this booklet showing location of these operations. When you consider the fact that, in addition to this, nine other fields feed their product thru the Huntington gateway you will begin to get a dim idea of the magnitude of our coal supply.

Labor

### WHAT IS THE LABOR SITUATION IN YOUR CITY ?

It is excellent. The balance between the supply of labor and the demand for it is admirably maintained by the steady influx of both factories and population which is the result of intensive work by the Chamber of Commerce. Labor is generally contented, well housed and competent.

Nationality

### WHAT NATIONALITY PREDOMINATES IN YOUR LABOR SUPPLY ?

A recently published government report supplies us with the information direct from authentic sources that Huntington's population is upwards of 98% American born. If this city had no other big asset it could claim the favorable consideration of the manufacturer on the strength of the sterling citizenship of its laboring population.

Wages

### HOW ARE WAGES IN HUNTINGTON ?

Wages are at a happy medium between high and low, high enough to give the workingman plenty of ready money and low enough that no inordinate burden is placed upon the employer. A close investigation will reveal the correctness of this statement.



WEST VIRGINIA COAL ON C. & O. SIDING EN ROUTE TO ITS DESTINATION

## BUSINESS STAYS GOOD HERE

### WHAT ARE THE FINANCIAL HABITS OF YOUR WORKINGMEN ?

Home  
Owners

As a general rule they are thrifty, steady and businesslike. It is estimated that about 65% of our laboring population own their own homes.

### TO WHAT EXTENT DOES UNEMPLOYMENT EXIST THERE ?

Prosperity  
Continuous

The financial and business depression of recent months has hardly left a trace in manufacturing, mercantile or labor circles in Huntington. Our great diversity of factories insures that shut-downs in any one line do not materially affect the prosperity of the city. In consequence unemployment has for many years existed only to a small extent in Huntington.

### WHY HAVE CONDITIONS IN HUNTINGTON BEEN SO UNIFORMLY GOOD, AS YOU SAY, WHEN ELSEWHERE A MARKED GENERAL DEPRESSION HAS BEEN FELT ?

Why  
Depressions  
Don't  
Hurt  
Us

That's a big question to answer in a few words. Briefly and principally—  
1st. Because of the city's commanding location with reference to raw materials needed by her manufacturers.  
2nd. Because the Chamber of Commerce has consistently—and successfully—worked



WORKMEN'S AUTOMOBILES AT A PROMINENT PLANT

## WE MAKE A LOT OF GOOD THINGS HERE

toward the establishment of a wide variety of industries, so that adverse trade conditions which effect one have little effect on others, and the result is a more stabilized average condition of prosperity.

3rd. Because of superb transportation facilities which make communication with the markets easy.

4th. Because the well known Huntington "service" of our manufacturers has created a well established market which has kept up the demand for the products.

### HOW MANY REAL FACTORIES HAS HUNTINGTON ?

Of manufacturing plants of sufficient size and interest to be deemed a factory the city has approximately 125. By far the greater number of these represent different lines of manufacture.

### WHAT ARTICLES ARE MANUFACTURED IN HUNTINGTON ?

The following is only a partial list but will serve to show the variety :

Awnings	Hospital enamelware
Boilers	House finish
Bed springs	Ice Cream
Bunsen burner stoves	Iron work—ornamental & fabricated
Blue pigment	Inner tubes
Blueing	Jumpers
Building stone	Knickerbockers, boys,
Brooms	Lumber
Burial caskets	Monuments
Bedroom furniture	Mausoleums
Bungs	Meat packers
Bottles	Meal
Boxes	Metal caps
Books	Mattresses
Brick	Masonic aprons
Buffets	Monel metal, sheets and rods
Chinaware	Mining machinery
Cots	Mouldings
Clay shingles	Mirror plates
Church furniture	Mine cars
Candy	Overalls
Clothing	Pressed brick
Chain	Portraits
Cigars	Picture moulding
Cigarettes	Picture frames
Canned Goods	Plate glass
Coffee	Paints
Cement blocks	Ready-cut-houses
Dyes	Roofing tile
Dining tables	Sausages and meat
Dressers	Side boards
Electric coal loaders	Stoves and castings
Enameled ware	Steel rails, splices, bolts, spikes
Electrical stoves	Spring beds
Furniture—wood and fibre	Sash doors and trim
Fruit crates	School furniture
Food containers	Stem ware
Flour	Tumblers—lead blown
Freight cars, cabooses, etc.	Tobacco hogsheads
Glass brick	Tents
Gas heaters	Tobacco
Gas ranges	Thermos bottles
Gas engines	Ultramarine blues, pinks
Gas fixtures	Veneer
Hats	Wagons
Hogsheads	Window glass, etc., etc.
Hardwood finish	

Number  
Of  
Factories

What  
We  
Make.

WORKINGMEN ?

It is estimated that

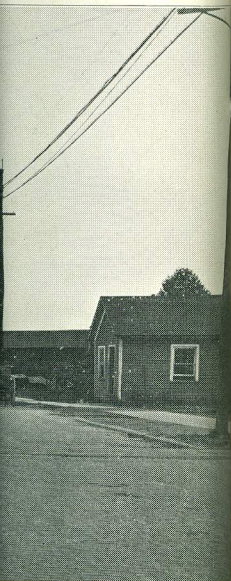
THERE ?

hardly left a trace in  
great diversity of fac-  
affect the prosperity  
limited only to a small

UNIFORMLY  
ED GEN-

principally—  
ce to raw materials

successfully—worked





WHOLESALE HOUSES ON THIRD AVENUE

**HOW ABOUT YOUR CITY AS A DISTRIBUTING CENTER ?**

As a  
Distribution  
Point

It should be clear that a city with transportation facilities as good as ours, and a community located as is Huntington, at the gateway of so rich a mineral and timber territory could not but be a good distributing point. The proof is that some 25 wholesalers and jobbers are doing a flourishing business here and some 50 concerns with manufacturing plants elsewhere maintain distribution offices in this city with representatives in charge. A Bourse or business exchange is operated at one of the leading hotels, where many manufacturers from both in and out of town exhibit their products for the convenience of out-of-town buyers as a saving of their customers' time. A large new commercial storage plant has recently been established, wherein many manufacturers keep large stocks of merchandise for quick and economical distribution to their trade.

**IS YOUR JOBBING TRADE EXTENSIVE ?**

Jobbing  
Trade  
Extensive

Quite so. It is estimated that more than a million persons were clothed and fed thru Huntington in 1920, and our jobbing houses during that year sold more than \$50,000,000.00 worth of goods, a large part of this business being from the rich coal fields that surround the city.

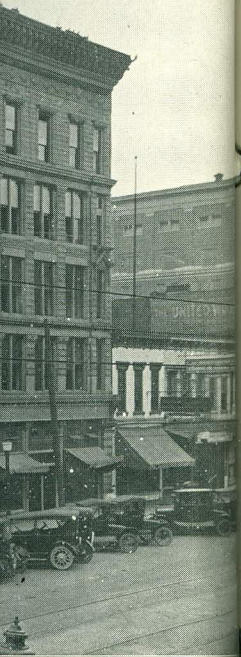
Water  
Transportation  
Available

*NOTE THE SIZE OF THE OHIO RIVER AT THIS POINT*

Water  
Transportation  
Available

**IS HUNTINGTON AN INLAND CITY ?**

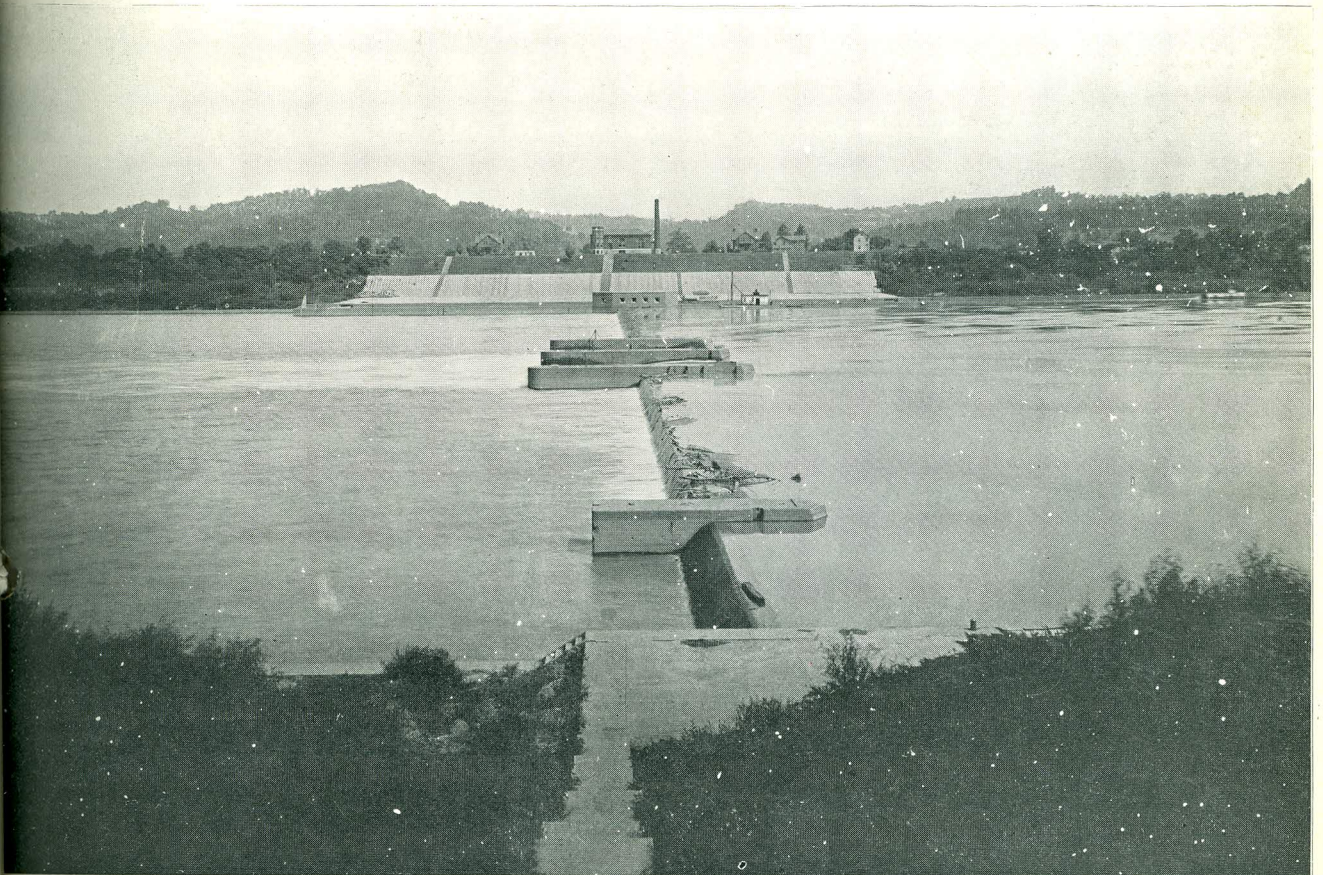
We are located on the beautiful Ohio River, which is now being improved by the U. S. Government so as to provide a nine foot stage of slack water from Pittsburgh to its mouth. Huntington is 300 miles below Pittsburgh and locks and dams have already been constructed both above and below this city so that we have ample water for navigation at all times. Dam No. 28, three miles west of the wharf, gives us a twelve foot pool of slack water along the entire river front. Dam No. 27, located just east of the city, is now under construction. Three logging streams flow into the Ohio within sight of the Huntington wharf.



**ENTER ?**

good as ours, and a mineral and timber that some 25 whole-concerns with manu-with representatives leading hotels, where products for the con- A large new commer-manufacturers keep large e trade.

were clothed and fed ear sold more than from the rich coal



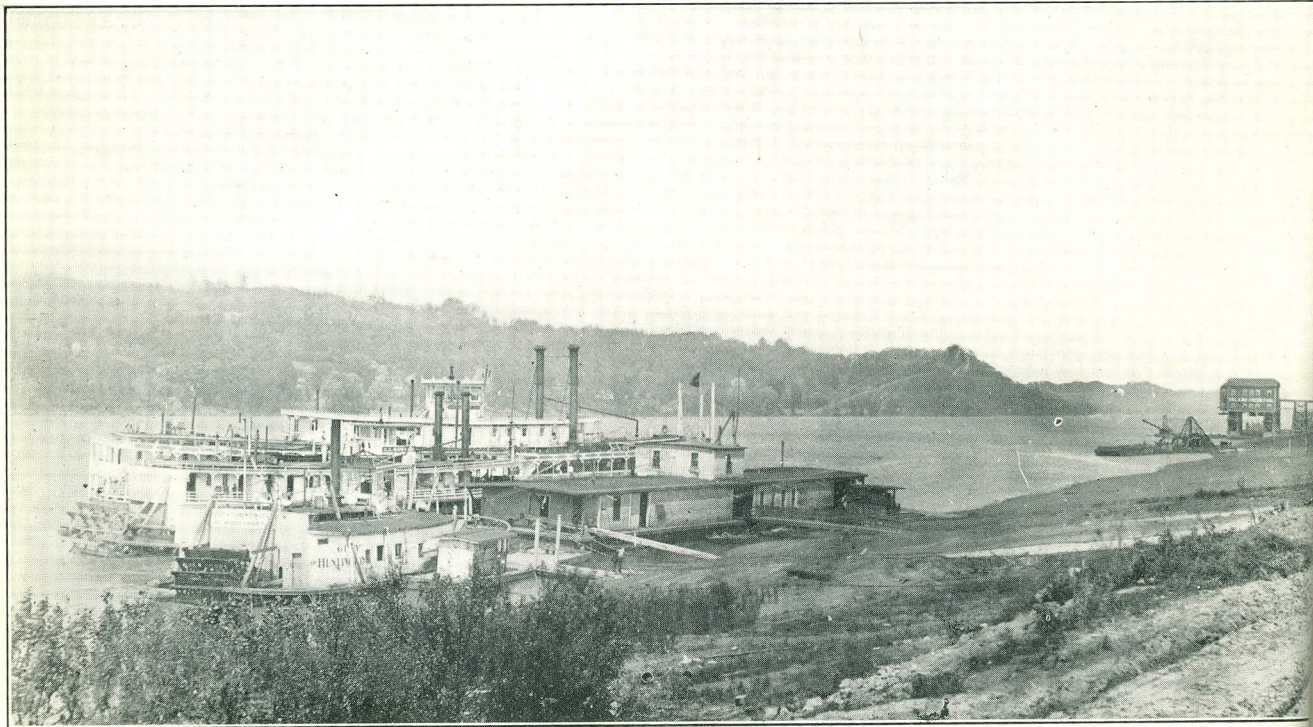
DAM 28

## OUR RIVER IS BOTH BEAUTIFUL AND POPULAR

### HOW DO YOU GET ACROSS THE RIVER ?

#### Crossing The River

At present four good steam ferries handle traffic to and from the Ohio side of the river. Plans are now under way, and a company has been organized to erect a bridge across the river here or to build a tunnel which will afford outlet to the other side.



AT THE LEVEE

### DO MANY PEOPLE OPERATE PLEASURE CRAFT UPON YOUR RIVER ?

#### Water Sports

Yes, and the number is increasing as the joys of skimming along over the water in a fast motor boat become more widely appreciated. The building of our locks and dams has provided plenty of slack water which makes this pleasure possible.



BOATING IS POPULAR

Securing  
Raw Mate

Distances  
From  
Large  
Trading  
Centers

Transportation  
Facilities

Railroad  
Traffic

## TRANSPORTATION FACILITIES GALORE

### Securing Raw Material

#### IS IT EASY TO SECURE RAW MATERIAL FROM OUTSIDE SOURCES ?

Due to our excellent transportation facilities, it is.

#### HOW IS HUNTINGTON LOCATED WITH REFERENCE TO THE LARGE TRADING CENTERS OF THE COUNTRY ?

In that section of territory from the Mississippi river eastward Huntington is extremely well and centrally located. Distance by rail from the principal large trading centers is here shown :

From New York .....	657 miles
Philadelphia .....	566 miles
Baltimore .....	476 miles
Newport News .....	504 miles
Pittsburgh .....	282 miles
St. Louis .....	498 miles
Chicago .....	446 miles
Detroit .....	324 miles
Cleveland .....	285 miles
Cincinnati .....	161 miles
Louisville .....	224 miles
Indianapolis .....	271 miles

#### WHAT ARE HUNTINGTON'S TRANSPORTATION FACILITIES?

The Chesapeake & Ohio main line passes thru the city. The Guyan Valley branch of the C. & O. has its terminus here. The Norfolk & Western Railway touches at Kenova, five miles west of the city limits, and we have three or four tracks available to carry traffic from that point to Huntington proper. The Ohio River Division of the Baltimore & Ohio passes through the City. The Big Sandy Division of the C. & O. Ry. juts out from Catlettsburg, just across the river from Kenova and connected by railroad and passenger bridges. Trains on the Virginian Railroad traverse the city over the C. & O. tracks, branching off to their own line at Deepwater, some 70 miles east. About 16 miles west of the city the Lexington Division of the C. & O. leaves the main line on its course thru the famous blue grass region. The Detroit, Toledo & Ironton Railway recently bought by Henry Ford, has its terminus at Ironton, about 20 miles west, with direct connection to the Norfolk & Western tracks. A bridge soon to be built will also give it access to the C. & O. tracks across the Ohio River. The government system of locks and dams, producing a nine-foot stage along the Ohio River, gives access via water for freight and passenger traffic. The Chesapeake & Ohio Railroad operates a special solid express train between this point and Cincinnati, Ohio. Locally, an adequate express service is maintained by the Ohio Valley Electric Railway, operating over its interurban lines, and available to local shippers.

#### IS TRAFFIC HEAVY ON YOUR RAILROADS ?

About 100 passenger and freight trains move into and out of the city each day.

### Distances From Large Trading Centers

### Transportation Facilities

### Railroad Traffic



Timber  
Near

**ARE YOU CLOSE TO TIMBER ?**

The city is the clearing point for millions of feet of timber every year. The mountains back of Huntington, and within easy reach by rail or water, are full of timber, great boundaries of which remain as yet practically untouched. Oak, chestnut, poplar, and all the well known varieties are to be had within a short haul of the city. This is the logical place for a woodworking industry.



A LOGGING STREAM AT HUNTINGTON

**WHAT RAW MATERIALS ARE PRODUCED WITHIN CONVENIENT  
DISTANCE OF HUNTINGTON ?**

Raw  
Materials  
At  
Hand

Glass sand: several large areas within easy reach.  
Moulding sand: plenty right in the city limits.  
Building sand: a plentiful supply.  
Gravel: practically limitless amount right in the city.  
Brick clay, fire clay and shale: an ample supply within easy reach.  
Paving brick: obtained from three points within 60 miles of the city.  
Stone, limestone, sandstone, freestone: in unlimited amounts within 60 or 70 miles of the city.  
Salt: large beds northeast and east of us a short distance.  
Cement: made within 20 miles of the city.

Plent  
Of Y

FACTURERS

every year. The moun-  
ater, are full of timber.  
Oak, chestnut, poplar,  
haul of the city. This



ONVENIENT

each.  
e city.  
ithin 60 or 70 miles

## FREIGHT HOUSE FACILITIES ARE EXCELLENT



CHESAPEAKE & OHIO FREIGHT HOUSE

### IN WHAT CONDITION ARE YOUR YARD AND FREIGHT HOUSE FACILITIES TO HANDLE TRAFFIC?

Plenty  
Of Yardage

The city has a very large yardage, a belt line completely encircling the main part of the city, with many miles of trackage for handling cars. Freight houses of both C. & O. and B. & O. railroads are large and commodious and manned by efficient crews.



BALTIMORE & OHIO FREIGHT HOUSE

## SERVICE IS OUR MOTTO IN HUNTINGTON

Freight  
And  
Express  
Tonnage

### IS FREIGHT AND EXPRESS TRAFFIC HEAVY IN HUNTINGTON ?

For the year 1920 the inbound express traffic was 220,000 shipments with a tonnage of 5,500 tons, and the outbound traffic amounted to 200,000 shipments with a tonnage of 5,000 tons. This city is also the largest express transfer office in the State.

The freight tonnage in and out of the city during the year 1920 amounted to 1,906,180 tons.

How  
We  
Help  
Shippers

### HAS HUNTINGTON ANY FACILITIES FOR ASSISTING MANUFACTURERS, SHIPPERS, ETC., IN SECURING FAIR FREIGHT RATES AND PROMPT ADJUSTMENT OF DAMAGE CLAIMS ?

The Chamber of Commerce has a branch organization known as the Jobbers & Manufacturers Bureau, under most efficient management, which has successfully demonstrated its value to the shipper and receiver of freight in this city. It has saved hundreds of dollars for our business men, has secured concessions which without its efforts would have been impossible and has repeatedly demonstrated its worth. At this bureau is kept on hand a complete file of tariffs and the bureau is able to quote promptly the correct tariffs on all commodities to any point in the United States. It traces shipments and collects from carriers claims for lost shipments, even taking cases to the Interstate Commerce Commission. In three years the Bureau has taken up and readjusted over one hundred cases where rates were adverse to Huntington shippers, bringing the results without friction. Rates that were out of line and that operated against this point have been readjusted through its efforts. A Cincinnati basis has been secured on many articles to southern points, whereas Cleveland rates formerly applied. Scores of similar readjustments and reclassifications have been secured. New industries find this bureau of great assistance in getting fair rates on their commodities.



POSTOFFICE BUILDING AND ROBSON-PRICHARD BUILDING

*Huntington—Bonus Divided by Other Places— $\frac{1}{2}$ Bonus=Huntington*

**DO YOU AWARD BONUSES TO DESERVING FACTORY PROPOSITIONS  
DESIRING TO LOCATE IN HUNTINGTON ?**

No  
Bonus

We do not. The advantages of a location here are so many and so obvious to those who investigate closely the claims of this city that no bonus inducements are found necessary. We do, however, render such other assistance as is possible.

**IS ELECTRIC POWER AVAILABLE IN PLENTY ?**

Electric  
Power

Yes. A large and well equipped power company furnishes current for both domestic and manufacturing purposes at very reasonable rates, in fact which compare favorably with those charged at Niagara Falls.

**WHAT IS YOUR INDUSTRIAL POPULATION ?**

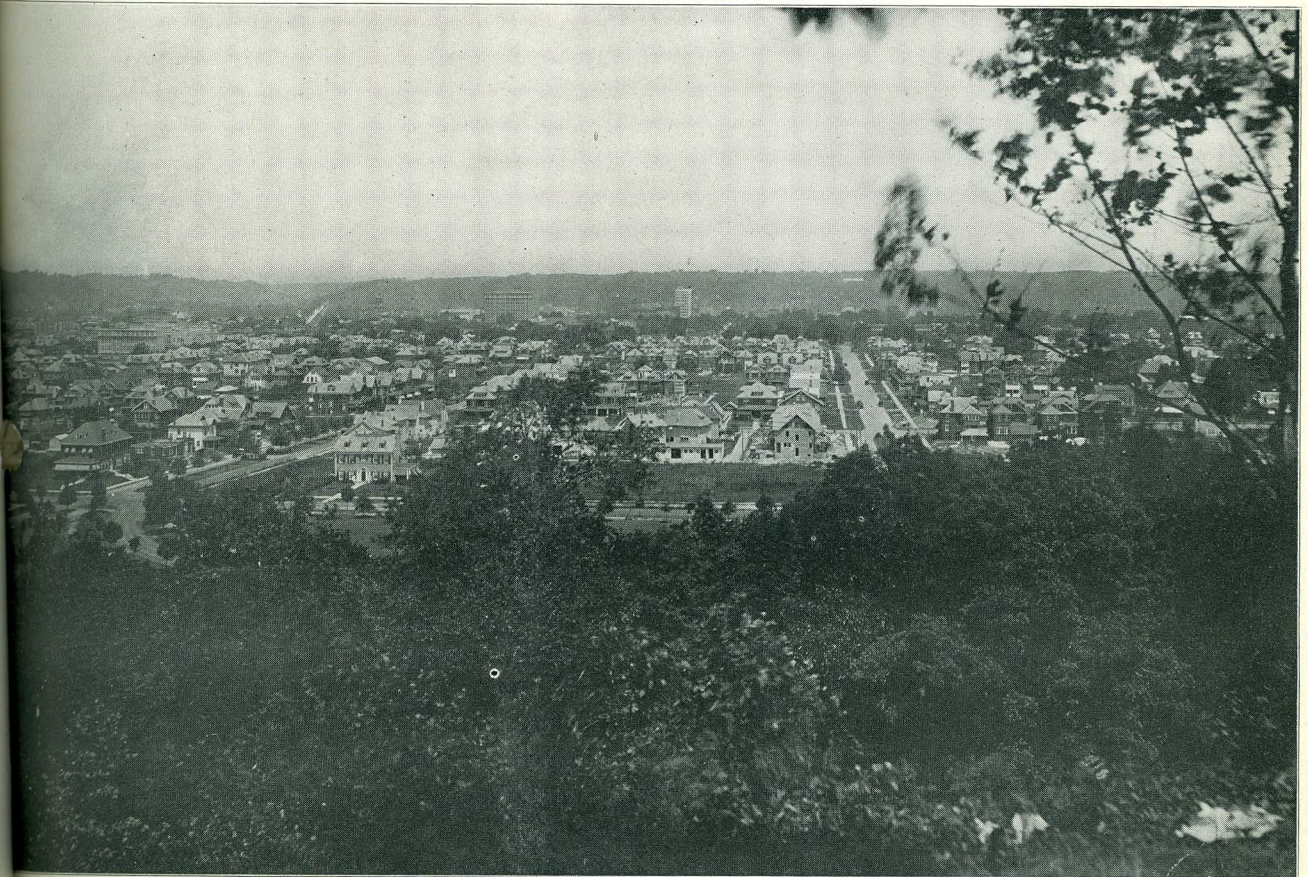
Industrial  
Population

The approximate number of industrial employees in the city in the year 1920 was around 10,000.

**WHAT IS THE PRESENT POPULATION OF YOUR CITY ?**

Total  
Population

The 1920 census gave the official population of Huntington as 50,177, an increase of 58% since the census of 1910, and of 321% since 1900. At this rate of increase the 1921 population of the city should approximate 52,090 people.



VIEW OF CITY FROM MONUMENT POINT

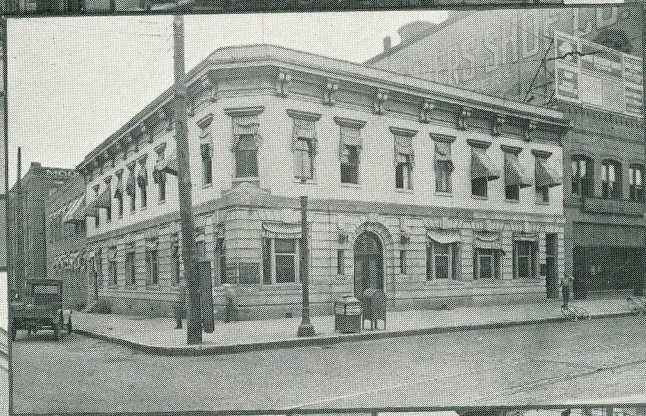
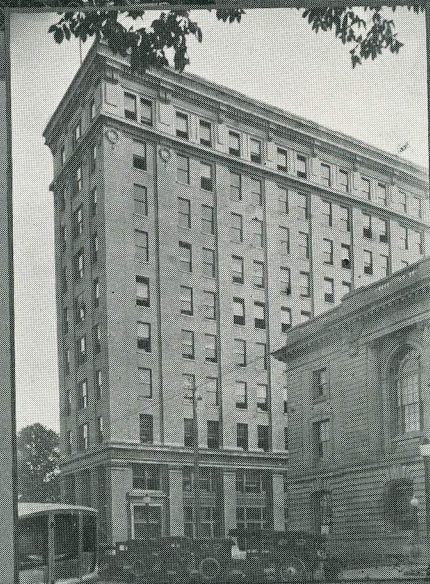
THE BULWARKS OF OUR FINANCIAL LIFE

WE

Statistic

Taxes

Tax Rates Compared



TWENTIETH STREET BANK  
OHIO VALLEY BANK  
CABELL COUNTY BANK  
PAGE TWENTY

HUNTINGTON BANKING AND TRUST CO.  
HUNTINGTON NATIONAL BANK

AMERICAN BANK AND TRUST CO.  
FIRST NATIONAL BANK  
UNION BANK AND TRUST CO.

# WE SPEND MORE FOR SCHOOLS THAN ALL OTHER THINGS COMBINED

## CAN YOU SHOW ANY STATISTICS WHICH EVIDENCE THE GROWTH OF YOUR CITY ?

We certainly can. Here, look at 'em.

### Statistics

Year	Population	Postoffice Receipts	Assessed Valuation	No. of Banks	Deposits
1921	(b)	.....	.....	8	\$20,372,847.76
1920	50,177	\$344,541.95	\$54,242,516	(a) 8	16,841,101.80
1915	45,441	155,004.17	40,204,114	9	6,436,634.29
1910	31,761	90,552.70	27,353,242	8	3,667,000.00
1900	11,923	25,048.50	4,350,000	3	1,317,000.00

The total bank clearings during 1920 were \$99,649,795.00.

(a) During 1920 the Huntington National and Day and Night Banks merged.

(b) The estimated population in 1921 is 52,090.

## WHAT IS YOUR TAX RATE ?

### Taxes

The total tax rate was for the year 1920, \$2.86 on the \$100 valuation, divided as follows:

City of Huntington .....	.75
Schools, etc. ....	1.46
County, etc .....	.45
State .....	.20

Total.....\$2.86

## HOW DO YOUR TAX RATES COMPARE WITH OTHER CITIES ?

### Tax Rates Compared

As compared with other cities in West Virginia as well as in the entire nation, Huntington's tax rate is shown to be low. According to official figures furnished by the Bureau of Financial Statistics of Cities of the Census Department at Washington, the per capita tax cost here is lower than in the two cities in West Virginia nearest Huntington in population, and our per capita rates compare most favorably with cities of like population and even larger population. The per capita tax cost for 1919 of the two West Virginia cities nearest Huntington in population was \$20.31 and \$21.53 respectively, while that of Huntington was \$18.34. The average for all cities of the nation for the same period was \$34.67. Of the 94 cities in the classification of population from 30,000 to 50,000, which was Huntington's during 1919, only fifteen showed a lower per capita cost than Huntington.

## LAWS ARE WELL ENFORCED HERE



FROM ROBSON-PRICHARD BUILDING, SHOWING CITY BUILDING IN RIGHT FOREGROUND

### WHAT FORM OF GOVERNMENT IS HUNTINGTON'S ?

#### City Government

We have what is known as the bi-partisan form of city government. The affairs of the city are carried on by a commission upon which both dominant parties must be represented. The appointive officers are divided between the two principal political parties, and all members of the city fire department and police department are under civil service, their retention in office being governed by good conduct and faithfulness in the discharge of their duties.

### HOW ARE YOUR LAWS ENFORCED ?

#### Law Enforcement

The officials of the city bearing in mind the disastrous effect of non-observance of law which has bred disorder in many cities, have insisted that existing laws be obeyed in letter and spirit by our citizenship, with the result that the city has greater freedom from law-breaking than can be shown by most cities of the same size in the entire nation.

### DO YOU HAVE ADEQUATE POLICE PROTECTION ?

#### Police Protection

Yes. Huntington's police force consists of a chief, lieutenants, fifty-four men and police matron. The high efficiency of the police department is well known in all the territory surrounding Huntington. The "crime wave" which recently engulfed many sections of the nation was not felt to any appreciable extent in Huntington.

### HAS HUNTINGTON A GOOD WATER SUPPLY ?

#### Water Supply

Persons in authority who have inspected and tested our water supply say that it is an exceptionally fine one, the water being pure and free from harmful germs. An excellent purification system together with a full equipment of powerful pumps insures an adequate supply of pure, clear water at all times.

Fire  
Protect

Quick  
Get-a-w



## OUR FIRE FIGHTING FACILITIES ARE ADEQUATE

### IS THERE AMPLE FIRE PROTECTION FOR MANUFACTURING PLANTS AND HOMES ?

#### Fire Protection

Six well equipped fire stations are maintained in various well selected localities in the city, situated so as to be able to reach any spot in their territory in the quickest possible time. Fifty paid men man these stations under the command of experienced and efficient officers. At the central fire station, which protects the business district and a part of the residence and factory districts, the equipment is entirely motorized. At other points it is expected that motorization will be at least partly accomplished within a short space of time. We have an adequate hose supply, together with aerial ladder sufficient to throw water over the highest building now in the city. Water pressure is maintained at an adequate strength and is capable of being increased to fill all calls which might be made upon it even in the greatest emergency.

### HOW ABOUT THE EFFICIENCY OF YOUR FIRE DEPARTMENT ?

#### Quick Get-a-ways

Huntington's fire department has achieved a very high degree of efficiency. Tests have revealed the fact that from the motorized central station the time of getting away at an alarm of fire is between 30 and 45 seconds.



CENTRAL FIRE STATION



## *STREETS ARE TOO WIDE TO MAKE CONFLAGRATIONS POSSIBLE*



A RESIDENCE STREET, ELEVENTH STREET AT SIXTH AVENUE

### **ARE FIRES FREQUENT OR INFREQUENT ?**

Fires  
Can't  
Spread

Fires happen just about as often as anywhere else, but there is one point worth considering in this connection in which Huntington stands pre-eminent. In all the history of the city there has never been a fire that crossed a street. This is largely due, of course, to the fact that our streets are so wide that conflagrations are practically an impossibility.

### **IN WHAT CONDITION ARE YOUR STREETS AND ALLEYS ?**

Wide  
Streets

Most of them are paved, except in the new parts of the city, where a few streets and alleys are yet in their natural state. The city has 77 miles of well paved streets and boulevards, mostly 60, 80 and 100 feet wide, together with a fine system of wide alleys. Streets, avenues and alleys are laid out to cross each other at right angles, and city blocks are regular and standard in size and shape.

### **ARE THE STREETS AND ALLEYS WELL KEPT ?**

Clean  
Streets

Yes. We have a very adequate street department, three large incinerators, and good facilities for cartage of rubbish thereto. The streets are kept clean and in good condition at all times.

Death  
Rate

Sewer

Housi  
Condi

## WE LIVE IN GOOD COMFORTABLE HOUSES

### WHAT ARE SANITARY CONDITIONS IN YOUR CITY ?

#### Death Rate Low

Excellent. Due to well kept streets and alleys, a pure water supply, city inspection of dairies, and an efficient health department, and there are no epidemics and disease is at a low ebb. People are healthy in Huntington. During the past six years the death rate has averaged only .0137%.

### DO YOU HAVE GOOD SEWERS ?

#### Sewers

Yes. The city has between 50 and 60 miles of well constructed trunk and lateral sewers.

### HOW ARE HOUSING CONDITIONS IN YOUR FACTORY DISTRICTS ?

#### Housing Conditions

Generally good. Our manufacturers and investors have realized that to have and keep a good and efficient supply of competent and contented labor, proper houses must be available. Consequently dwellings in factory districts as well as elsewhere are of a type that favors health, cleanliness and sanitation. The general policy of the city authorities has been to enforce existing laws against tumble-down unsanitary dwellings, with excellent results. We have no congested or tenement district in the generally accepted meaning of the term.



MAIN STREET, GUYANDOTTE

WE HAVE KEPT ON BUILDING



THE EMMONS APARTMENTS

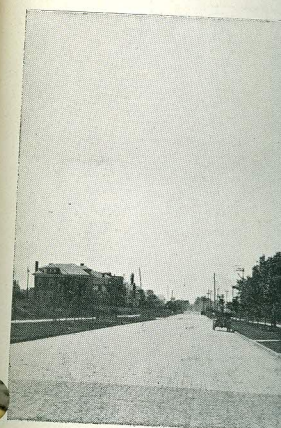
HAVE YOU ENOUGH HOUSES FOR YOUR PEOPLE?

Building

The general stagnation in building during the past year or two has not affected Huntington to nearly so large an extent as it has other parts of the country. All thru this period building operations have continued in progress here. Our excellent transportation facilities, our proximity to necessary materials, have made it easier to go ahead with building operations. As a result during the last year approximately 500 residences were built in Huntington.

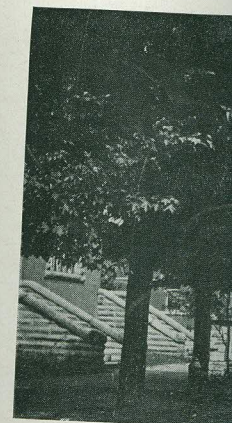


AN OLD LANDMARK, STILL BEAUTIFUL



1920 Total

Cost of Building



HOMES BUILT HAVE BEEN GOOD ONES



FIFTH AVENUE, WEST FROM SIXTH STREET

*Mossman Residence on corner.*

JUST HOW EXTENSIVE HAVE YOUR BUILDING OPERATIONS BEEN ?

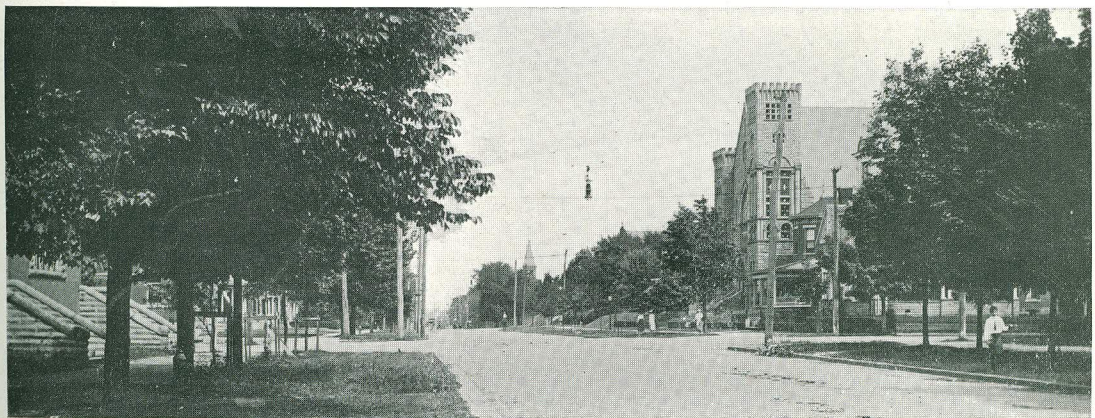
1920 Total

Building operations during 1920 totaled the sum of \$2,400,000.00.

IS THE COST OF BUILDING HIGH IN YOUR CITY ?

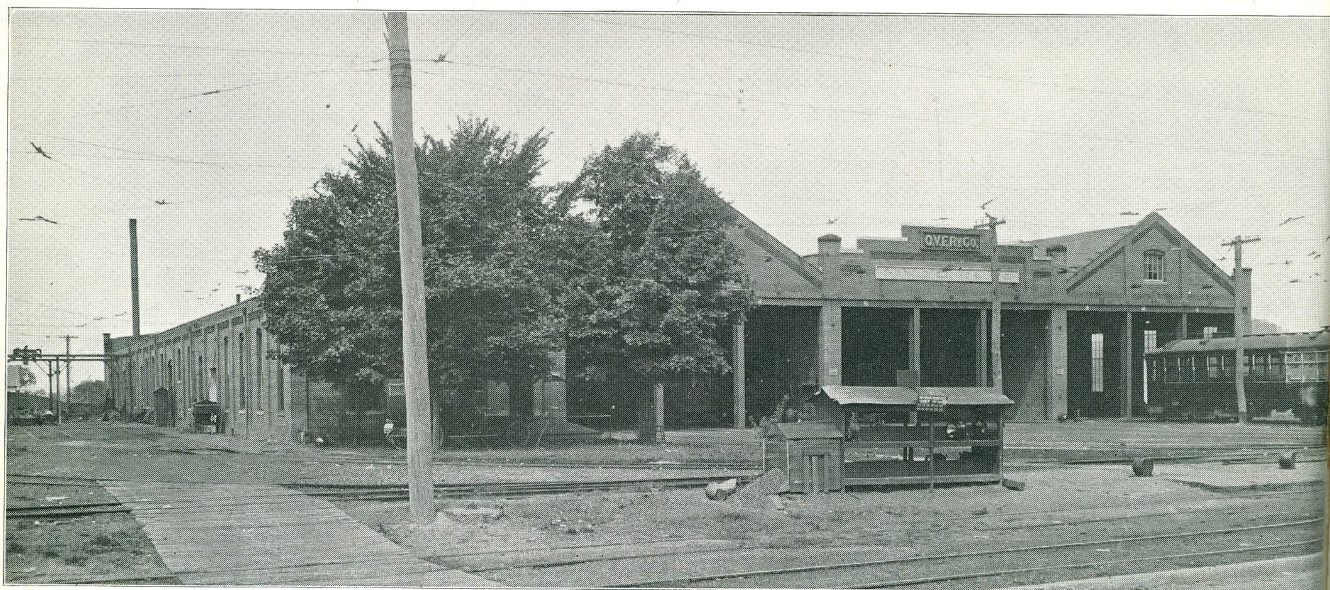
Cost of  
Building

Not more so than elsewhere in the nation. If anything it is less so, due to our excellent situation with reference to raw materials, especially building materials. We have always had a good supply even during shortages elsewhere.



FIFTH AVENUE AT TENTH STREET

## WE HAVE GOOD STREET CAR SERVICE



OHIO VALLEY ELECTRIC RAILWAY CAR BARNS

### WHAT KIND OF LOCAL TRANSPORTATION DO YOU HAVE ?

#### Street Cars

We have a very excellent street car system which operates commodious steel cars over lines which extend from the heart of the city over the principal thoroughfares to all the principal outlying points. A well equipt interurban system is also operated, which extends along the river for a distance of 16 miles, connecting by an excellent ferry system at Ashland, Ky., with a similar electric line which extends from Coal Grove on the Ohio side of the river to Portsmouth, a distance of about 35 miles more. Plans have already been discussed for the building of an interurban line eastward a distance of 50 miles, which would connect this city with the State Capital. The local and interurban lines which radiate from Huntington are largely double-tracked. In addition to an adequate street car service numerous bus lines traverse the country roads which lead to the city.

#### Handling Peak Traffic

### IS PASSENGER SERVICE GOOD ?

It is entirely satisfactory, and even at peak hours of travel the traffic is carried in an adequate manner, which transports men and women to and from their employment quickly and acceptably.

#### Many Served

### WHAT IS THE POPULATION SERVED BY YOUR LOCAL TRANSPORTATION SYSTEM ?

Approximately 150,000 people live within easy reach of the heart of the city and are served by our transportation systems.

## WE ARE RATHER PROUD OF OUR PROGRESSIVE ROAD-BUILDING

### HAS HUNTINGTON GOOD CHURCH ACCOMMODATIONS ?

#### Churches

Some 35 churches, embracing practically all the leading denominations, are located here. These are served by a ministry the personnel of which is exceptional, and which in ability is not excelled in any city of the nation. Practically all the churches maintain large and effective Sunday Schools, so great interest indeed being shown that Huntington has become known throughout the state as an outstanding Sunday School city. The effectiveness of our churches is well illustrated by a recent experience of one of our leading denominations. This congregation conducted a four-weeks' campaign for new members, this being done without the carrying on of a revival in its generally accepted sense, without the importation of any foreign talent and without the addition of a single church service. The net result was the addition to its membership of approximately 150 persons.

### HOW ARE YOUR COUNTRY ROADS ?

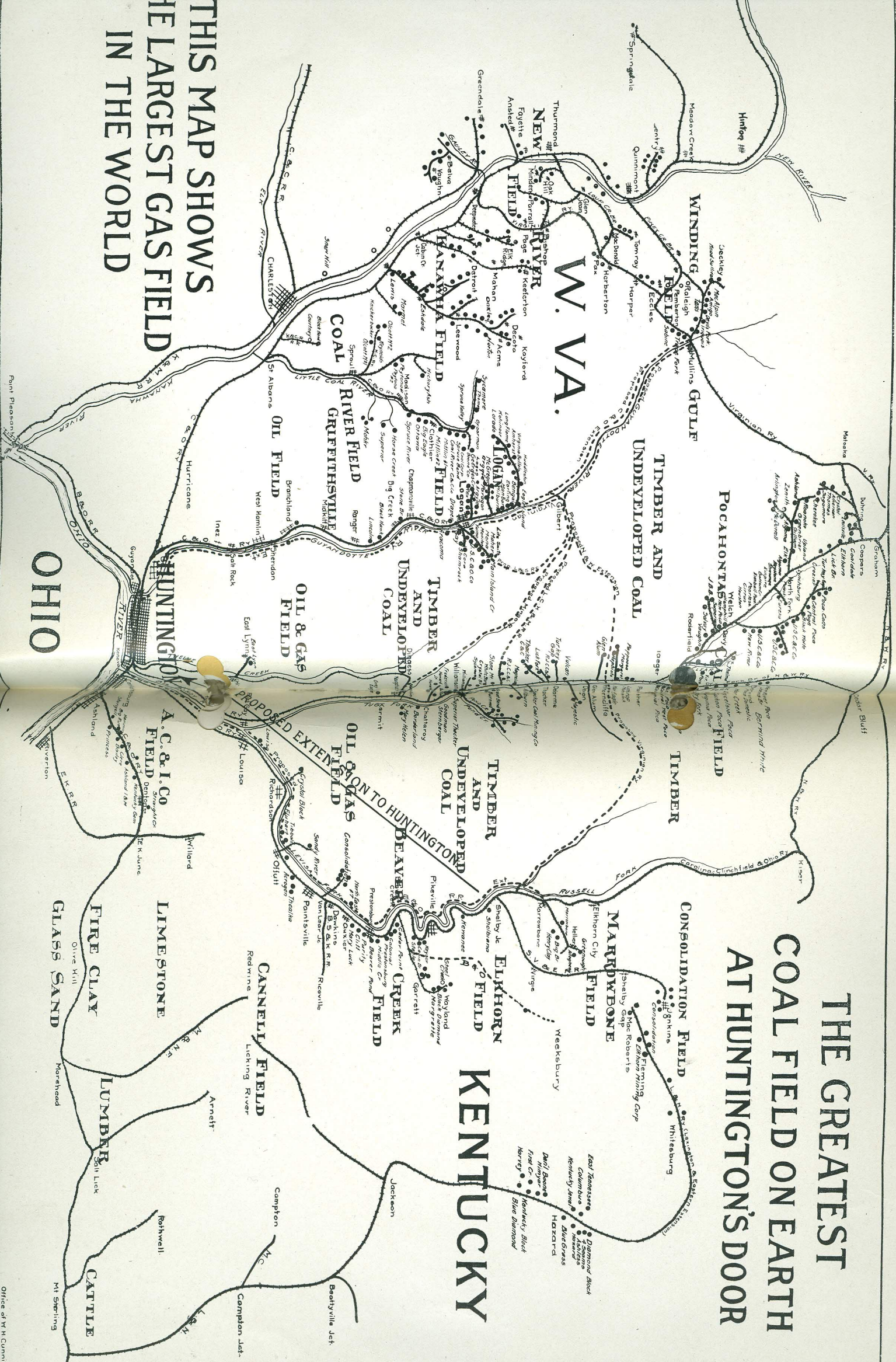
#### Hard Roads

Cabell County, in which Huntington is located, is in the front rank in progressive road building. There are about 45 miles of brick paved roads in the county outside the city proper. In addition to this there are about 23 miles more of important county roads known as "Class A" roads, making a total of about 68 miles of "Class A" roads in the county for which the county will be given credit in allotting the apportionments of the \$50,000,000 provided in the State good roads constitutional amendment recently passed. Under the new law Cabell County will be entitled to receive for the extension of her hard road system something over \$200,000 from the proceeds of the sale of good roads bonds. Most of the principal roads of the county to outside points are well paved now for many miles around the city.



HARD PAVED ROADS EXTEND THRU THE HILLS TO EVERY PART OF THE COUNTY

**THIS MAP SHOWS  
THE LARGEST GAS FIELD  
IN THE WORLD**



**THE GREATEST  
COAL FIELD ON EARTH  
AT HUNTINGTON'S DOOR**

**KENTUCKY**

YOU CAN FLY HERE IN FACT AS WELL AS IN BUSINESS



OLD BRIDGE ACROSS GUYAN RIVER

ARE YOU "ON THE MAP" AERIALLY?

Aero-  
nautics

Under the auspices of the Chamber of Commerce a large aerial field is established at a point convenient to the city, and this will make Huntington prominent among those cities of progress that are in the front rank of aeronautics. Huntington is the center of a large section of territory having the only landing field available for miles around, the nearest being at Dayton, Ohio.



THE NEW GUYAN BRIDGE

Public  
Library

For  
The  
Young  
People



## ACTIVITIES AMONG OUR YOUNG PEOPLE



CARNEGIE LIBRARY

### DO YOU HAVE A PUBLIC LIBRARY ?

Yes, with an equipment of about 25,000 volumes, and an average monthly circulation of 8500.

### DO YOU HAVE ORGANIZED UPLIFT WORK AMONG YOUR YOUNG PEOPLE ?

Yes. Among the agencies of general scope are the Camp Fire Girls and Boy Scouts. About a dozen groups of Camp Fire Girls have been formed, with a large membership, and are working most effectively. The Boy Scouts have a large and flourishing organization, comprising at present some twenty troupes with a membership of about 500, under the charge of a paid scout executive and backed by the Rotary Club and numerous private individuals. Each year a Scout Camp is operated, during which intensive training and recreation are offered troupe members. In addition to these agencies public playgrounds have been established at numerous points, under proper supervision, and more are planned. A community survey recently organized will work toward the establishment of many more such playgrounds. Parent-Teacher organizations are maintained in connection with the public school system. These organizations work in the interest of the social life of the young people as well as toward the creation of a better spirit of co-operation between the school and the home.

Public  
Library

For  
The  
Young  
People

## EDUCATIONAL ADVANTAGES HERE ARE EXCELLENT

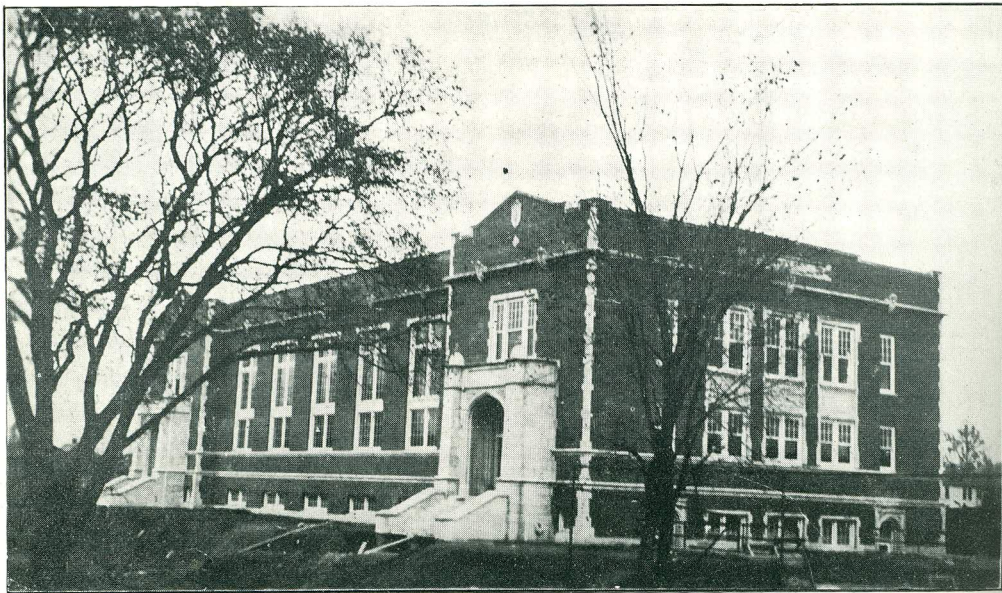


MARSHALL COLLEGE FROM THIRD AVENUE

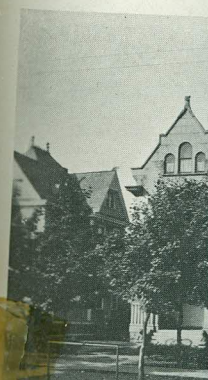
### ARE YOUR SCHOOL FACILITIES ADEQUATE ?

#### Colleges

Huntington offers splendid educational advantages. St. Edwards College is a Catholic institution, having an enrollment of 75 to 100, with a competent force of six teachers. Marshall College, a State institution is located here, having a splendid faculty of 42, with a present and growing enrollment of about 600 students. This institution has excellent equipment and provides a wide choice in the matter of courses. Among these is available a four-year course leading to the degree of A. B. in education, a standard normal course of two years, a pre-medic course of two years, and special courses for students who do not desire preparation for teaching—courses which may secure advanced college credits on an elective basis. To the already fine equipment of Marshall College new and modern equipment is constantly being added. Science Hall, a beautiful and commodious new building has been occupied only a short time. A magnificent new building has just been completed in which the physical activities of the students will be supervised and directed along the most approved lines. Adequate gymnasium equipment will be available in this new building.



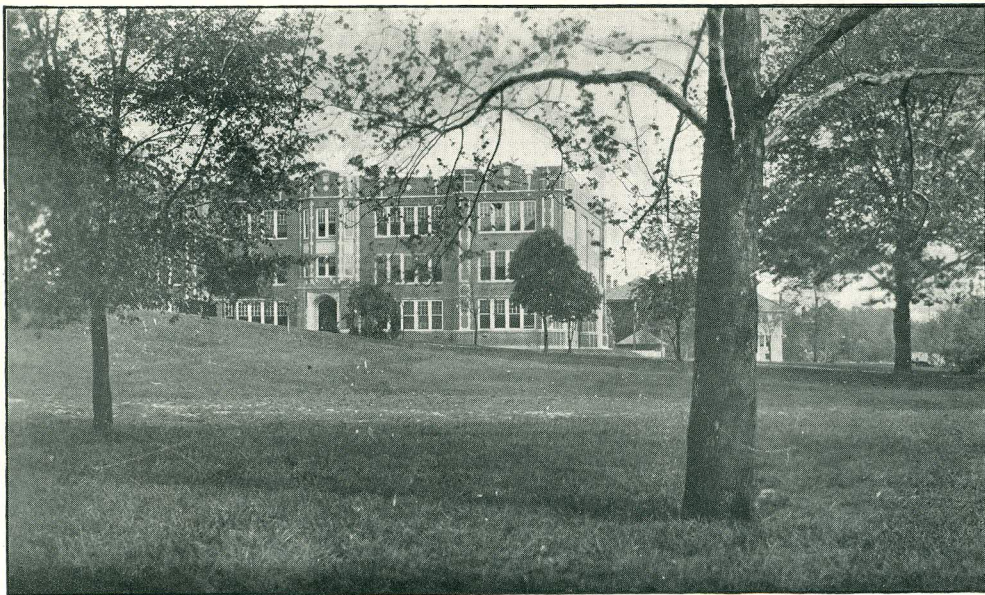
NEW GYMNASIUM, MARSHALL COLLEGE



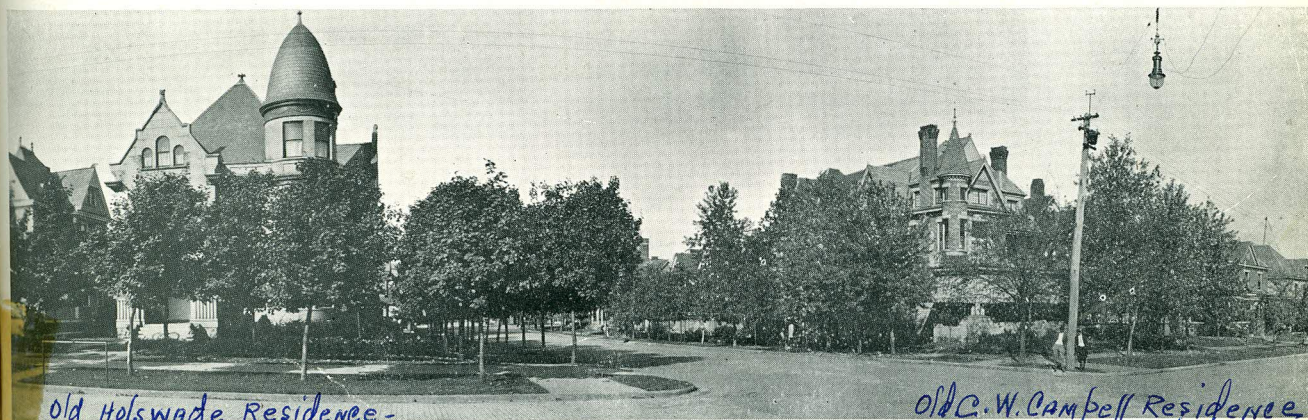
old Holswac



MANY BEAUTIFUL TREES LINE OUR STREETS



SCIENCE HALL, MARSHALL COLLEGE



Old Holswade Residence -

ONE OF OUR WIDE SHADY STREETS

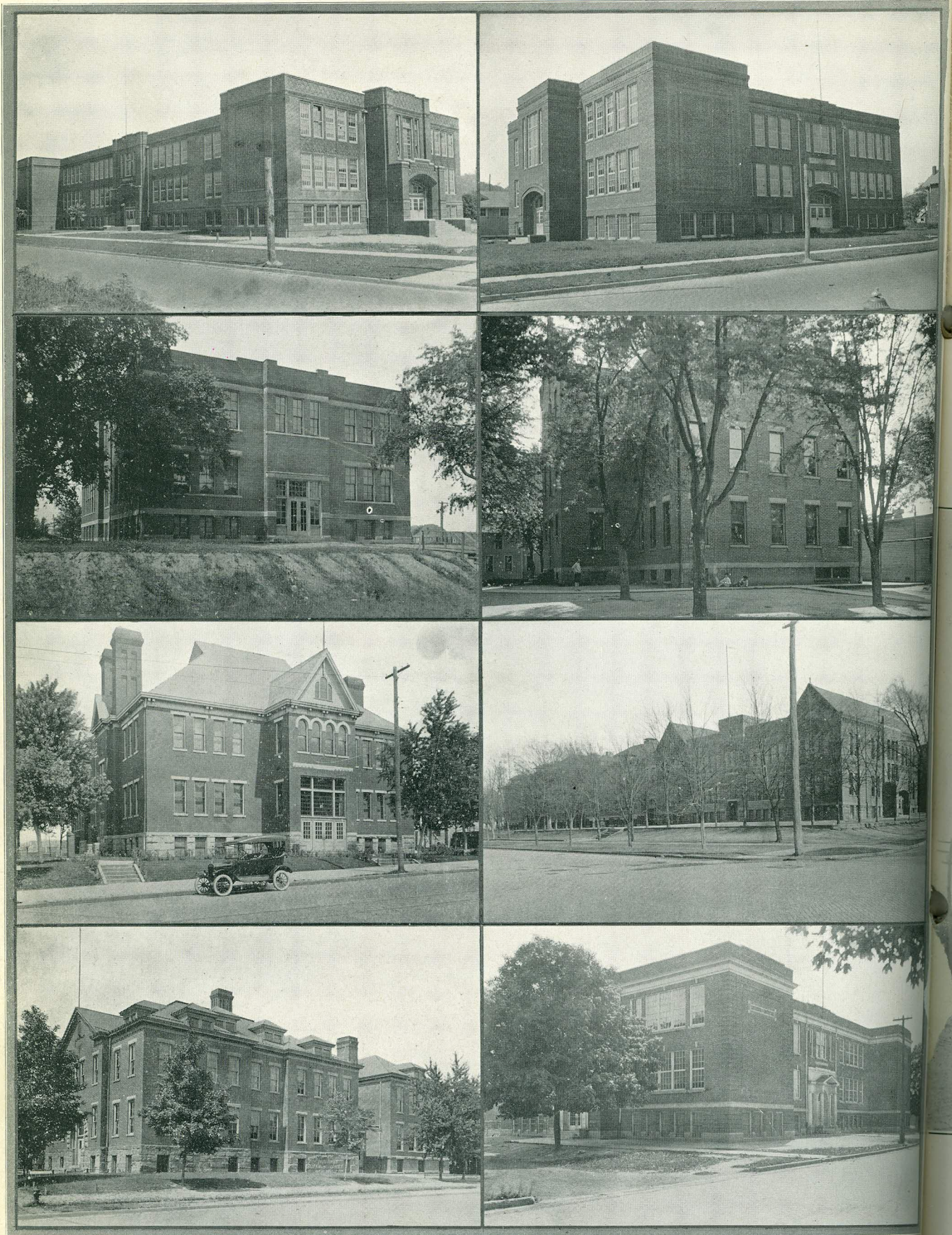
Old C. W. Campbell Residence  
11th St., looking East on 5th Ave.



FIFTH AVENUE AT ELEVENTH STREET

Trinity Church

WHERE WE MANUFACTURE CITIZENS



Pub  
Sch

SOME OF OUR SCHOOLS

## OUR CITIZENSHIP FINISHING PLANT

### DO YOU HAVE A GOOD PUBLIC SCHOOL SYSTEM?

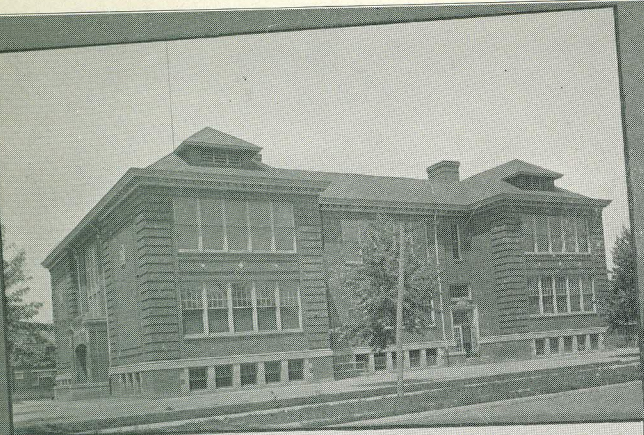
Our Public School system is the peer of any in the nation. We have 26 schools in all, 21 for white and 5 for colored children. Only a few of these are housed in old buildings, and even these have been remodeled to provide properly for the health, safety and convenience of the pupils. By far the greater part are modern in design and construction, some being quite generally regarded as models of their kind. Our beautiful new high school, recently erected at a cost of \$300,000.00, has attracted wide attention. The enrollment in our public schools now exceeds 10,000. There are 408 on the teaching and supervisory staff. The fact that our public school system is growing at a rate which requires a new school room for every twelve days of the year may be regarded as a testimony to the efficiency of the system and the high regard in which it is held. Many persons bring their families to Huntington for the benefit of the superb educational advantages offered by our public schools and colleges.

### Public Schools

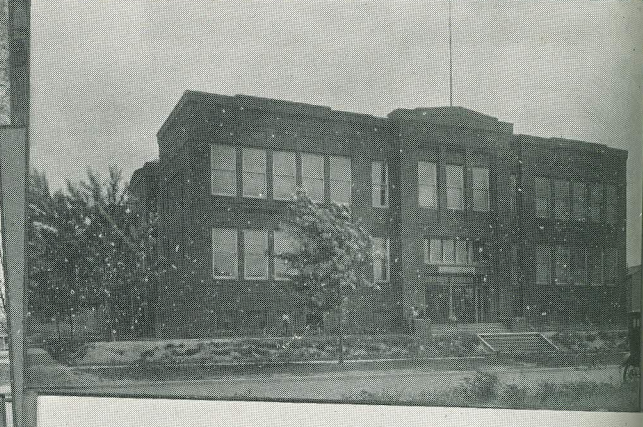
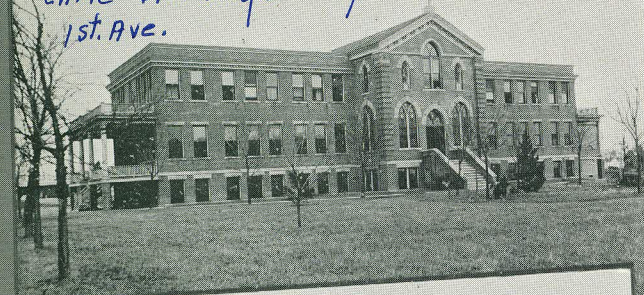


THE NEW HIGH SCHOOL

NOTE THE SUBSTANTIAL CHARACTER OF THE BUILDINGS



Catholic Home for Boys - later be-  
came St. Mary's Hospital - 29<sup>th</sup> St. &  
1st Ave.



Competent  
Teachers

Other  
Advantages

Business  
Training

MORE SCHOOLS—EDUCATION IS POPULAR HERE

## OUR SCHOOL ADVANTAGES DRAW MANY PEOPLE HERE



MASONIC TEMPLE 3rd. Ave. at 11<sup>th</sup> St.  
also occupied by Watts-Ritter Wholesale House.

### Competent Teachers

Graduation from a standard college or university is a prerequisite for holding a teaching position in high school and for new appointees in junior high schools. Standard normal school graduation will be required of grade teachers after 1923.

### WHAT ARE SOME OTHER ADVANTAGES OF YOUR SCHOOLS ?

### Other Advantages

- Night schools, twice a week, open to all, regardless of age.
- Summer school, eight weeks duration.
- Medical inspection, with findings recorded, which accompany child throughout its school life.
- Dental and other clinics.
- School nurse, for inspection of health conditions and home visitation.
- Open-air classes for children who need such attention.
- Promotions semi-annually, which provides swifter progress for children of superior ability.
- Special classes for exceptional children.
- Supervised or directed study, eliminating much home study.

### Business Training

### DO YOUR SCHOOLS OFFER ANY BUSINESS TRAINING ?

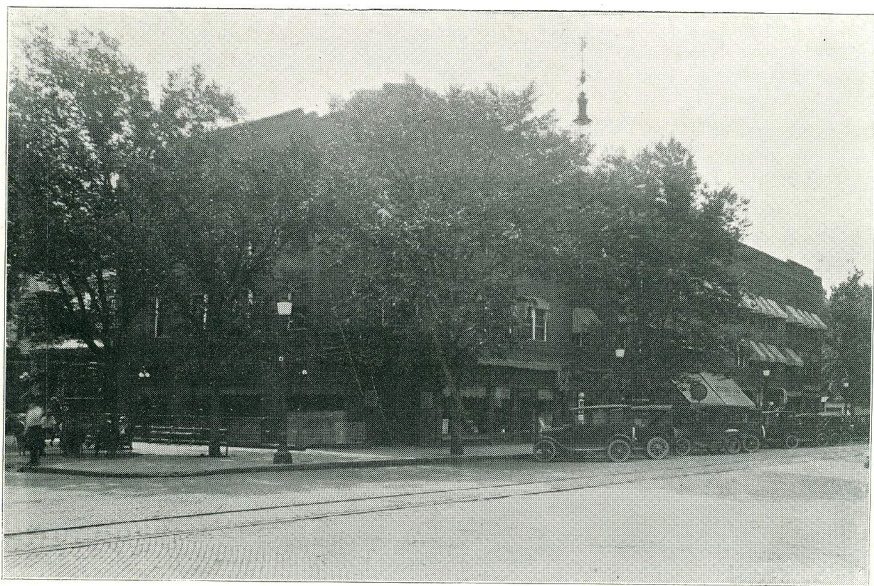
Yes. Our public school system includes a course which embraces the subjects necessary in modern business practice. Besides this, the city is the home of two exceptionally fine business schools, the teaching forces of which are most efficient, and the graduates of which find ready calls for their services.

WHERE WE ENTERTAIN STRANGERS

---



THE NEW FARR HOTEL



FIFTH AVENUE HOTEL



*HOTEL ACCOMMODATIONS ARE EXCELLENT AND RATES REASONABLE*



FREDERICK HOTEL

**WHAT HOTEL ACCOMMODATIONS HAVE YOU ?**

**Hotels**

We have eleven fine hotels with a capacity of about 900 rooms, the construction being along approved modern architectural lines. Our hotel accommodations rank among the very best. That numerous organizations, some of national scope, are bringing their conventions to this city is an indication of the truth of this statement. Among those entertained here recently was the convention of National Association of Stationary Engineers with an attendance of upwards of 1000 delegates who went away from the city highly pleased with their experiences while here.

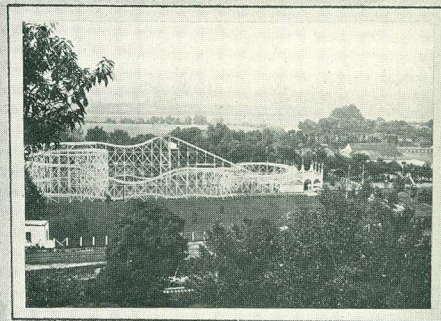
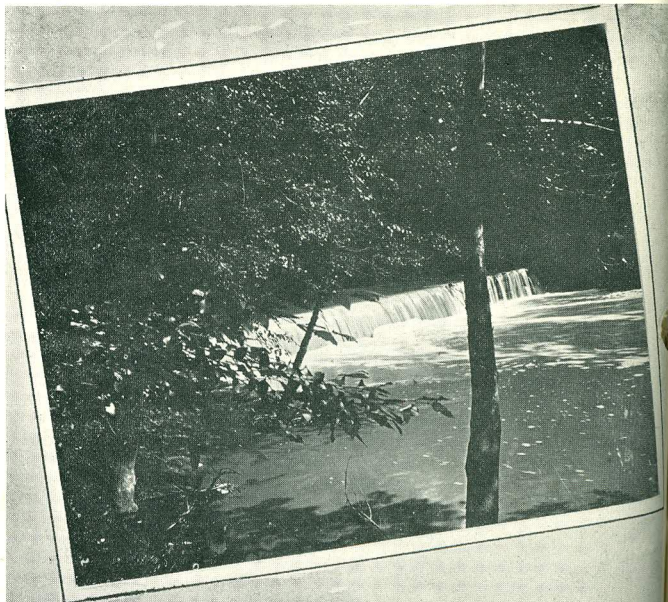


HUNTINGTON HOTEL

**HAVE YOU GOOD FACILITIES FOR ENTERTAINING CONVENTIONS?**

Yes, the finest for miles around. The Chamber of Commerce building has a capacity of 5,000 people. The Biggs Armory has a capacity of 2,500. The new City Auditorium will seat upwards of 2,500. Marshall College auditorium seats 2,200; the new high school auditorium 1,200; the Huntington Theatre 1,200; the different church auditoriums are mostly large and commodious, three or four of them with capacity of 1000 or more, and others smaller. Besides these there are numerous other halls with smaller capacity.

**Entertaining Conventions**



POINTS NEAR THE CITY



Par

## A PROMINENT AND POPULAR SPOT

---

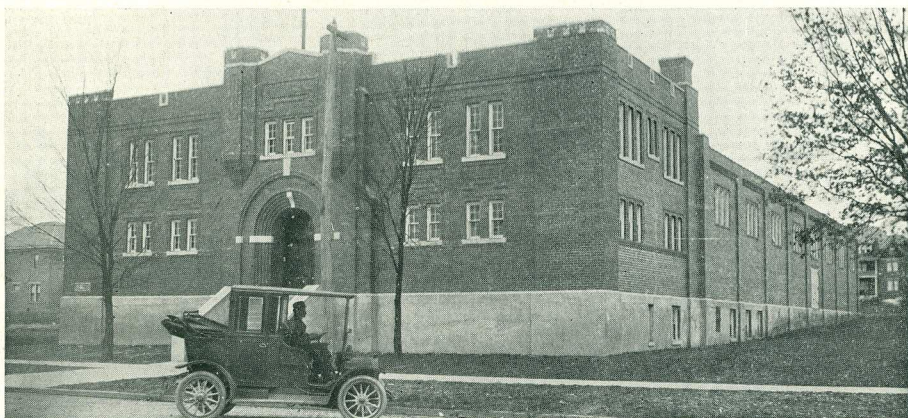


RITTER PARK FROM MONUMENT POINT

### HOW MUCH PARK ACREAGE HAVE YOU ?

#### Parks

About 171 acres in all, well located for the convenience and enjoyment of the population. As this booklet goes to press word has just been received of an additional 75 acres of park lands given the city thru the efforts of one of our public spirited citizens, making a total of about 250 acres in all now set aside for park purposes.



BIGGS ARMORY

## PLENTY OF WHOLESOME AMUSEMENTS

### Amusements

#### WHAT AMUSEMENT ADVANTAGES HAVE YOU ?

Five commodious motion picture theatres.

One large theatre where the spoken drama is produced.

Another theatre under construction in the western part of the city.

One excellent vaudeville house.

Two fine country clubs.

Several large city parks.

Two big amusement parks within easy reach.

Fifteen social clubs.

Two superb golf courses.

Slack water along the levee, promoting the operation of pleasure craft on the river.

A concert bureau which brings to the city the best talent in the land.

A choral musical organization.

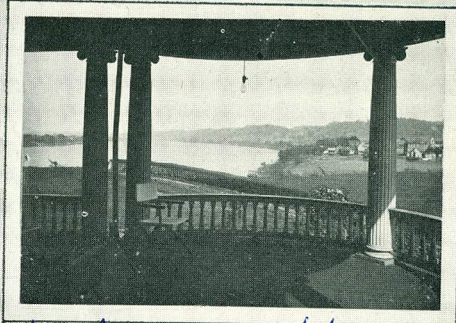
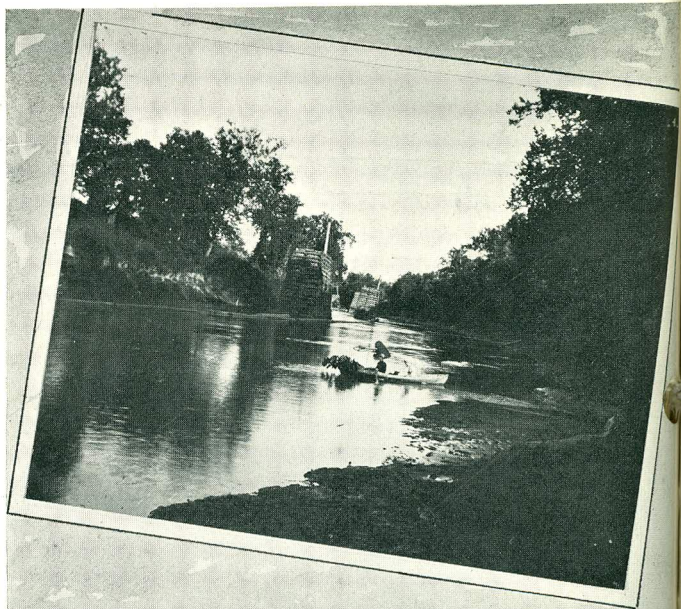
Many miles of well paved streets and boulevards for automobiling.

An aviation field if you want to fly.

#### WHAT IS THE SEATING CAPACITY OF YOUR THEATRES ?

About 7500.

### Theatre Capacity



View from EMMONS' home - overlooking  
Ohio + Guyan Rivers - [Staunton Rd. at  
30th St.]



WHERE COOLING STREAMS ABOUND

Golf

## YES, WE PLAY GOLF

---



CITY BUILDING

### ARE YOUR GOLF COURSES GOOD?

Golf

Yes. The West Side Country Club has an excellent course of nine holes. The new Guyan Country Club is now completing a fine eighteen hole course. There will not be a finer one in the land. The total acreage in these courses is about 250 acres.



AT THE NEW GUYAN COUNTRY CLUB

## OUR POPULAR CLUBS

### WHAT ARE SOME OF YOUR CLUBS?

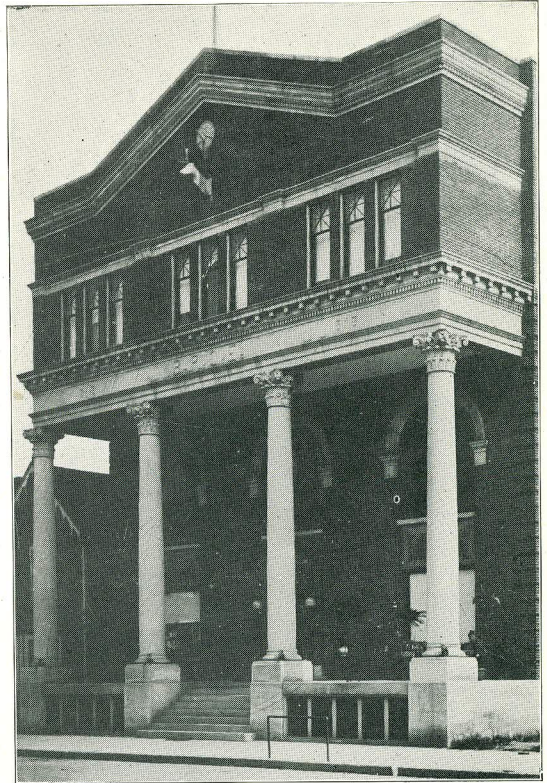
#### Clubs

The Guyan Country Club, open for business summer of 1921, the West Side Country Club, the Guyandot Club, Elks Club, Rotary Club, Advertising Club, Kiwanis Club, Woman's Club, Masonic Club, Moose Club, etc.

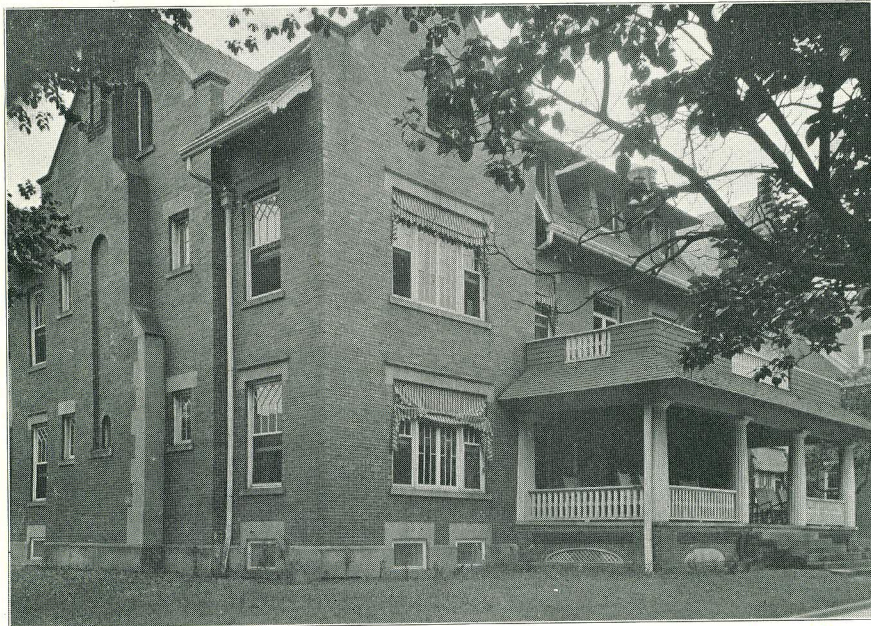
### ARE YOUR COUNTRY CLUBS WELL EQUIPPED?

#### Country Clubs

They are, and well managed. In the West Side Club the course is good and the service exceptionally satisfactory. The new Guyan Club will have the best 18-hole golf course in this entire section of the country. Thousands of dollars are being spent upon it. In addition to this it is expected to have a magnificent swimming pool and superb entertainment facilities. These are now under construction and the club is expected to open for real business in the summer of 1922.



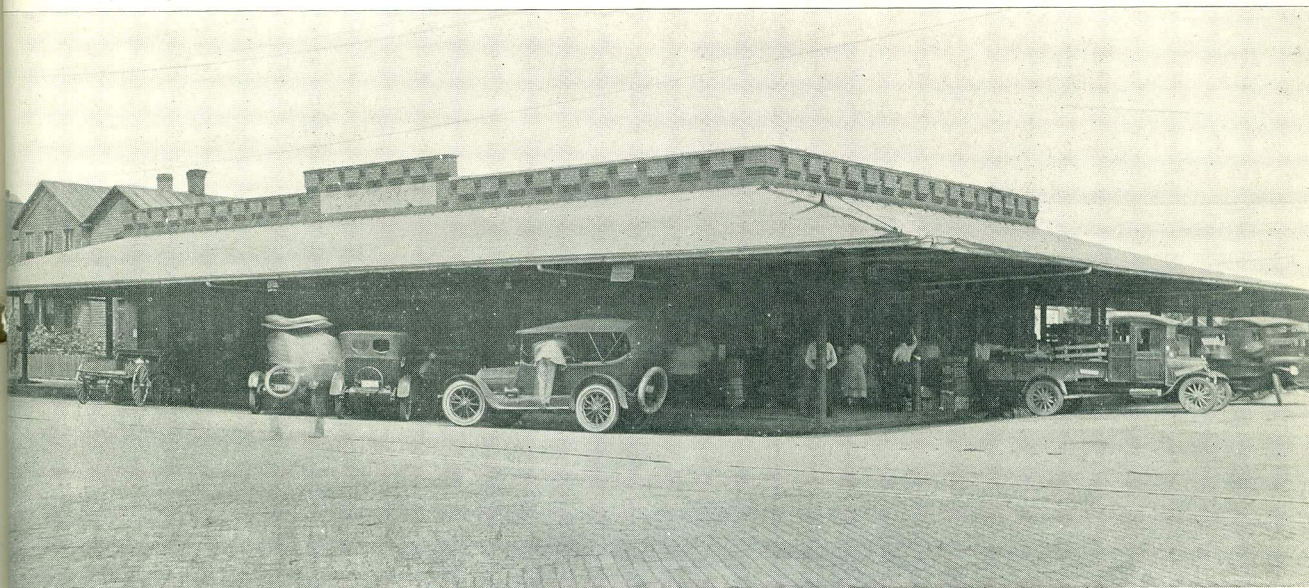
ELKS CLUB



THE GUYANDOT CLUB

*cor. 11th St. + 4th Ave.*

LARGE SELECTIONS OF SEASONABLE GOODS ALWAYS AVAILABLE



CITY MARKET HOUSE

**DO YOU HAVE A MARKET HOUSE ?**

Market  
House

Yes, a large and well patronized one, centrally located. Great throngs of people may be seen in its aisles during the summer months, bent on securing for their tables fresh good things direct from the farm.

**DO YOU HAVE A GOOD RETAIL MARKET ?**

Retail  
Market

Huntington's retail stores are finer than the average in any city twice our size. Our merchants are progressive and maintain large assortments of seasonable goods at all times. Our department stores are the best in the state. A paramount advantage enjoyed by this city and those who reside in its surrounding territory is that local train schedules are so arranged that buyers can visit the city and return home with the expenditure of only part of a day.

EVEN IF IT DID COST MORE TO LIVE HERE IT WOULD BE WORTH IT



VANITY FAIR--CHAMBER OF COMMERCE BUILDING

#### IS THE COST OF LIVING HIGH IN HUNTINGTON ?

#### Cost of Living

Not more so than elsewhere. Indeed in many instances it is lower. A rich farming territory is found to the north of the city and these farmers bring their produce in enormous lots for distribution in the city. As early as 2 A. M. during the production and harvest months farmers may be found crossing the river into the city at the various ferries. The territory to the south and east of the city is fast being developed by the extension of hard roads, making communication with the city easy. Market gardens are springing up in large numbers. Produce will be plentiful here.



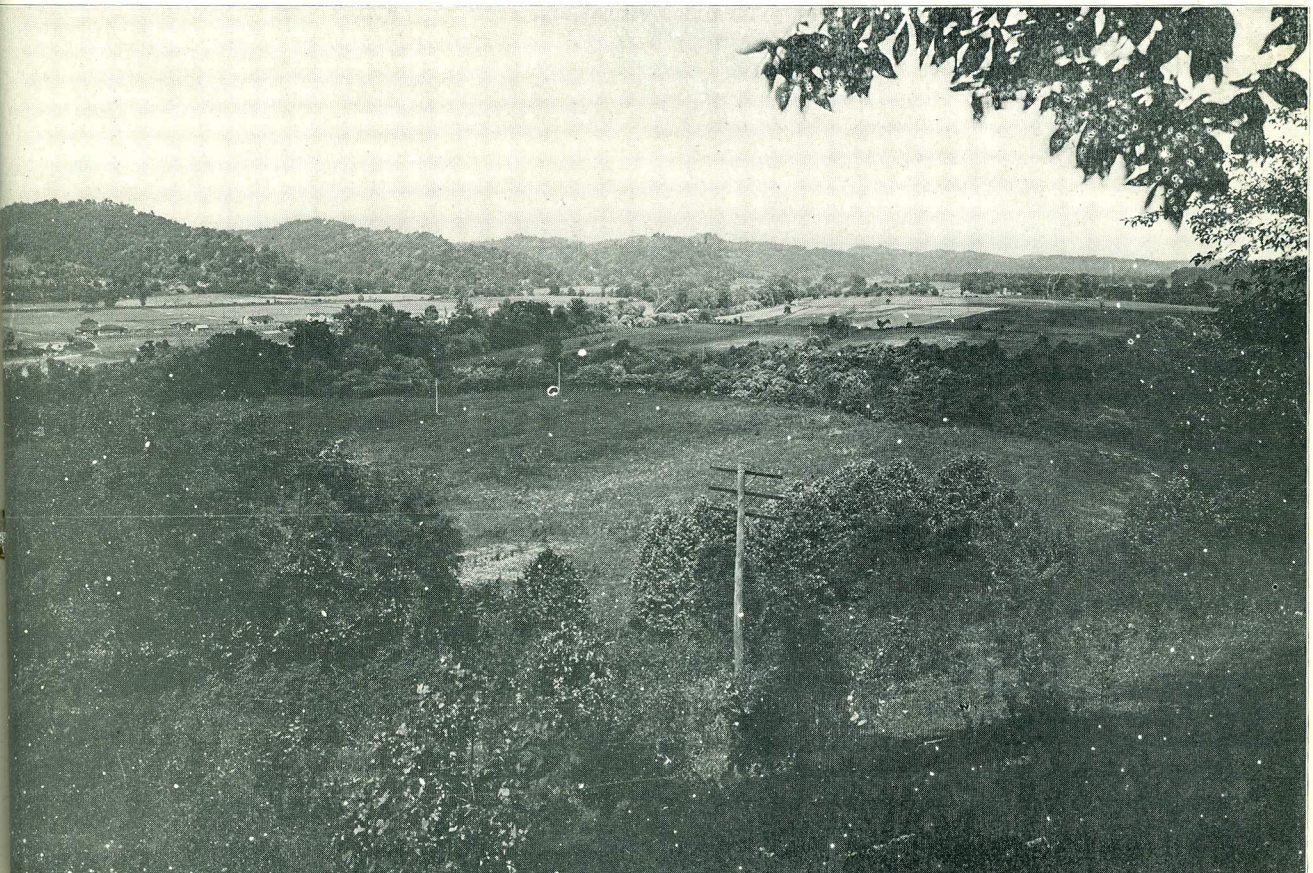
*"THIS IS THE LIFE"*

---

**ARE THERE AVAILABLE LOCATIONS FOR COUNTRY HOME SITES ?**

**Country  
Home Sites**

The hills back of the city are dotted with beautiful villas and our well paved roads extend arteries of traffic to the utmost bounds of the county, making available thousands of acres of land easy of access and suitable for the building of homes "far from the madding crowd" and away from the noise, bustle and dust of the city. Bring your business to Huntington and you may live in the hills within reach of your business in a few minutes time. There is "health in the hills."



VIEW FROM THE BEAUTIFUL PEA RIDGE ROAD

WHERE WE MEND DAMAGED CITIZENS



GUTHRIE HOSPITAL  
 HAWES-MARPLE HOSPITAL  
 PAGE FIFTY

C. AND O. HOSPITAL  
 KESSLER-HATFIELD HOSPITAL

BARNETT HOSPITAL  
 NEW HUNTINGTON GENERAL HOSPITAL

re of  
 e Sick  
 and  
 unfortunate

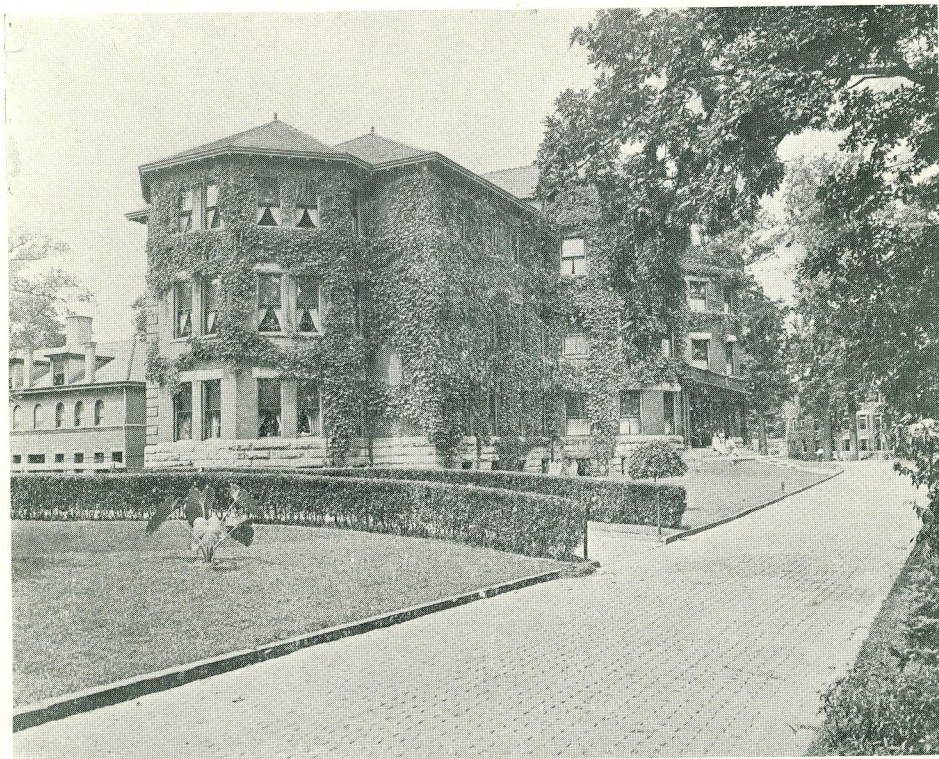
## CARE OF SICK AND UNFORTUNATE

### HOW DO YOU CARE FOR YOUR SICK ?

Huntington is well prepared for the care of its sick, both the physically and the mentally sick. Five private hospitals are maintained, four white and one colored. The Salvation Army has a well equipped hospital. The state of West Virginia maintains a beautiful property on the hills back of the city for care of the insane and mental derelict. The Union Mission, a non-sectarian institution, not only cares for the sick when necessary but operates more largely as an institution for the care of orphans and unfortunate children. A juvenile detention farm is an institution planned for the very near future, the county court having already laid a levy for the support of this institution.



SALVATION ARMY CITADEL



HUNTINGTON STATE HOSPITAL



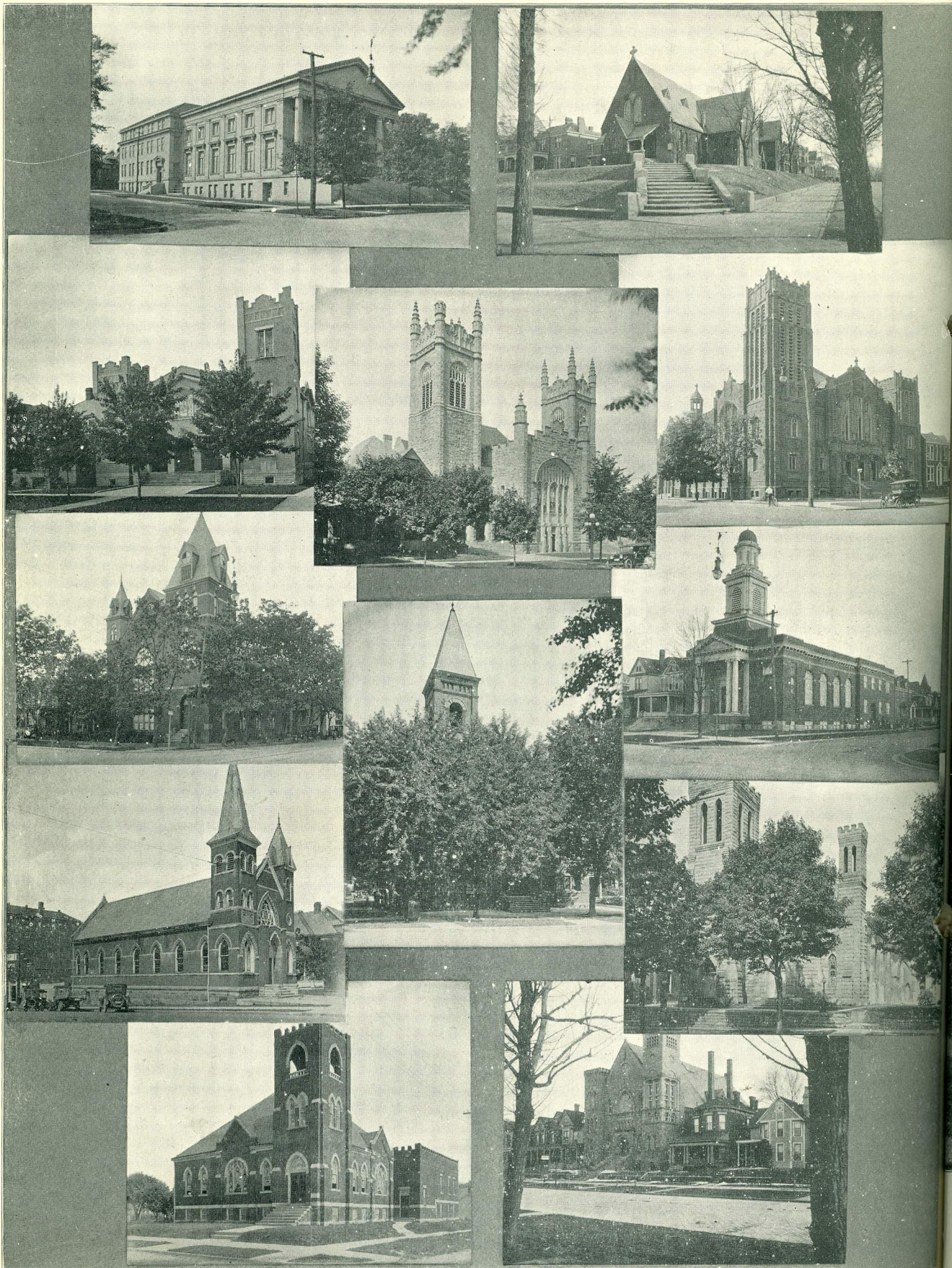
e of  
Sick

fortunate



BARNETT HOSPITAL  
HUNTINGTON GENERAL HOSPITAL

THE HIGHER LIFE



Climate

FIFTH AVENUE BAPTIST CHURCH  
 UNITED BROTHERS CHURCH  
 TWENTIETH STREET BAPTIST CHURCH  
 CHEF SHOLOM JEWISH SYNAGOGUE  
 JEFFERSON AVENUE METHODIST CHURCH

FIRST M. E. CHURCH  
 CENTRAL CHRISTIAN CHURCH

TRINITY EPISCOPAL CHURCH  
 JOHNSON MEMORIAL M. E. CHURCH, SOUTH  
 FIRST CONGREGATIONAL CHURCH  
 ST. JOSEPH'S CATHOLIC CHURCH  
 FIRST PRESBYTERIAN CHURCH

## OUR WEATHER MAN HAS THE "HUNTINGTON SPIRIT"

### HAS HUNTINGTON A GOOD CLIMATE ?

#### Climate

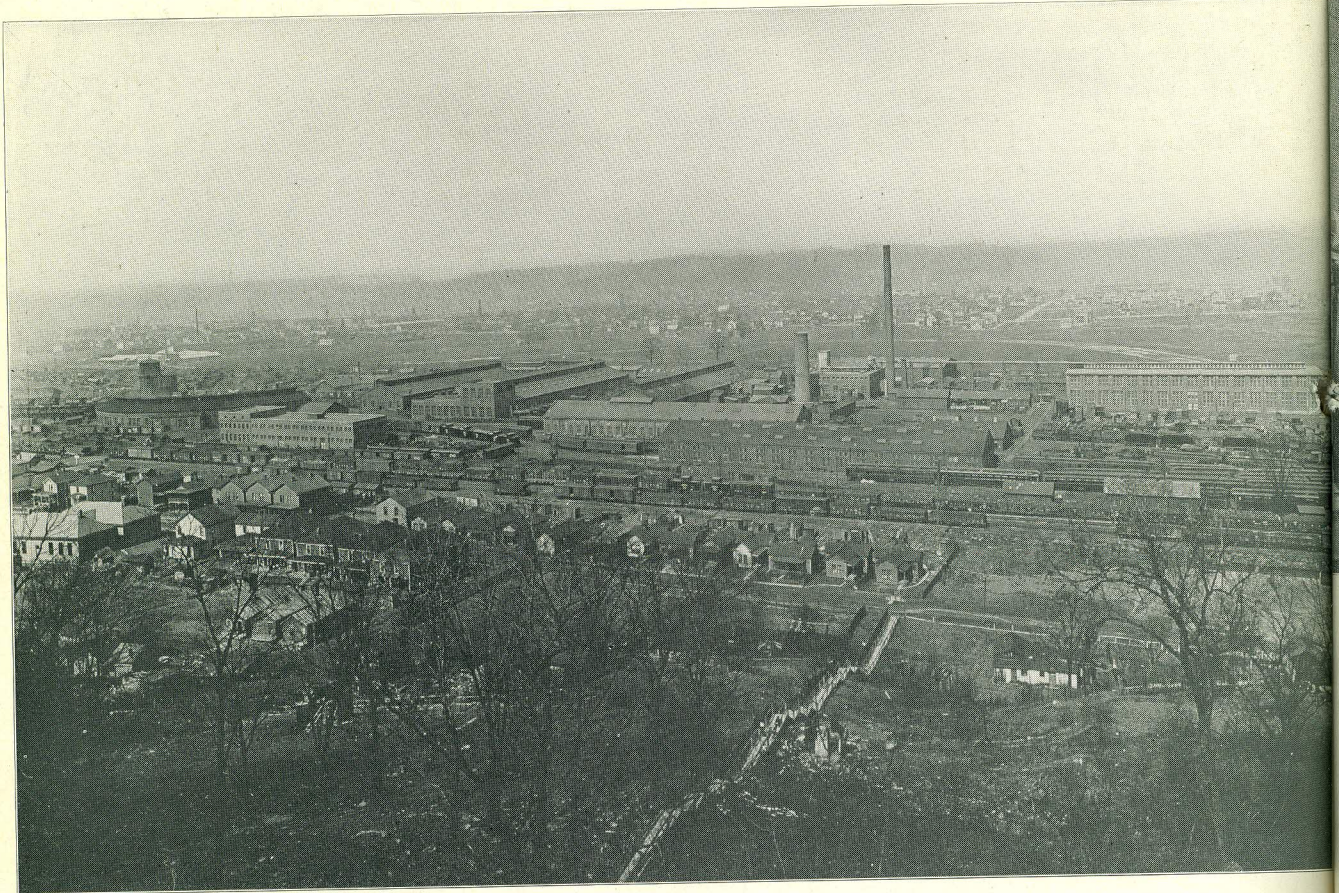
Weather conditions here are most favorable for industrial efficiency, the city being subjected neither to extreme heat nor extreme cold. Summers are not so hot as in New York nor are the winter months as cold. Conditions therefore are extremely favorable from an industrial standpoint. The average hourly wind movement is approximately five miles, the prevailing winds being west. Huntington has an elevation of 510 feet above sea level, surrounded by hills rising 300 feet above this elevation.



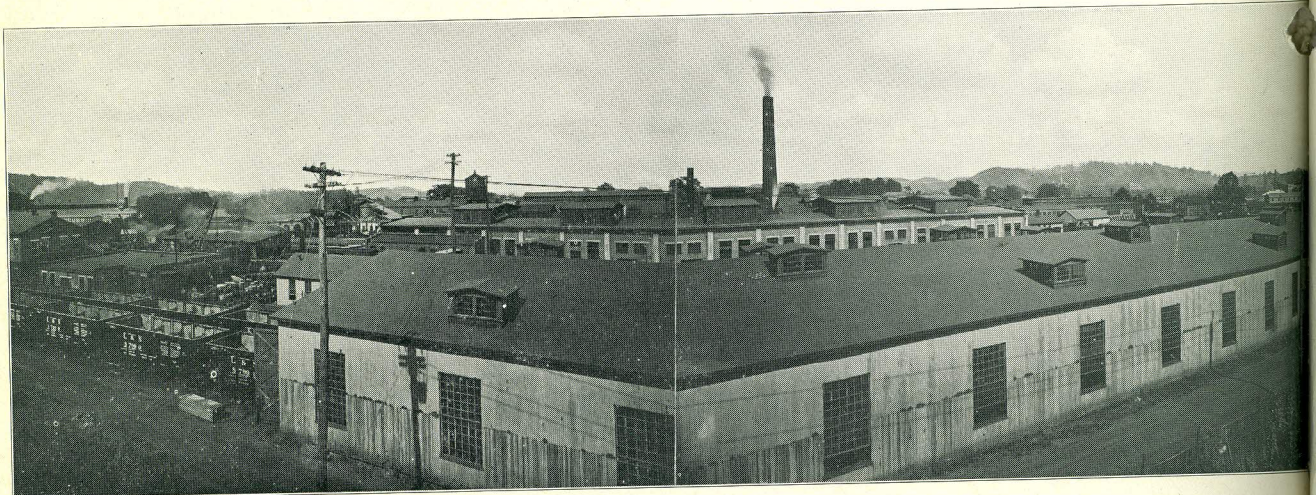
A BEAUTIFUL HOME IN THE HILLS OVERLOOKING THE CITY  
*Part Hills*

*Built by John Sheppard,  
Lawyer; later sold to Charles Watts,*

HUNTINGTON'S PIONEER INDUSTRIES



CHESAPEAKE & OHIO REPAIR SHOPS FROM THE HILLS



A CORNER OF THE AMERICAN CAR AND FOUNDRY COMPANY PLANT

Rain  
And  
Snow

Tempe

**NOT TOO HOT, NOT TOO COLD, NOT TOO WET, NOT TOO DRY**



NINTH STREET, LOOKING SOUTH FROM THIRD AVENUE

**DO YOU HAVE MUCH RAIN OR SNOW ?**

The annual rainfall for Huntington for fifteen years has averaged 41.52 inches, ranging from 30.80 in 1904 to 51.90 in 1907. The average number of days with .01 inches or more of precipitation is 113, the highest average being March with 12 days and the months of lowest average being September and October, with 16 days each. The average snowfall over a period of fifteen years was 19.2 inches. The snowfall is light and as a rule does not remain long on the ground. May to September inclusive, show no trace of snow fall.

Rain  
And  
Snow

**WHAT IS THE TEMPERATURE THROUGHOUT THE YEAR ?**

The average annual temperature for the past fifteen years has been 54.5 degrees F. By months the average has been as follows:

Temperature

January.....	32.4
February.....	30.9
March.....	45.8
April.....	53.2
May.....	65.
June.....	72.5
July.....	76.7
August.....	74.7
September.....	68.9
October.....	56.1
November.....	43.4
December.....	34.4

CITY AND COUNTRY ALIKE ATTRACTIVE



BATHING IS POPULAR



FOURTH AVENUE, EAST FROM NINTH STREET

Frost



**"UNCLE SAM" HAS A FINE "PLANT" HERE**



POSTOFFICE

**HOW ABOUT FROST?**

The average date of the first killing frost in autumn is October 13th, and of the latest killing frost in spring, April 19th. The earliest date of killing frost in autumn is September 30th, and the latest in the spring is May 9th. Seasons are of nearly equal length.

Frost

**IN CONCLUSION**

The Huntington Chamber of Commerce, as well as the entire citizenship of the city, desires to extend to you a sincere and hearty invitation to move to Huntington. You will find a hearty greeting, a friendly spirit awaiting you. We believe you will find the reasons for such a move are ample and convincing. If anything more is needed we suggest a trip to the city to see for yourself.

Sincerely yours,

THE HUNTINGTON CHAMBER OF COMMERCE,  
Huntington, W. Va.

MANY HOMELESS CHILDREN ARE CARED FOR HERE



HUNTINGTON UNION MISSION

LIST OF INDUSTRIES LOCATED IN HUNTINGTON,  
AND THEIR PRODUCTS

JANUARY ,1921.

NAME	PRODUCT
Empire Furniture Co.	Sideboards and dressers
Nicholson-Kendle Furniture Co.	Bedroom furniture
American Car and Foundry Co.	Freight cars, cabooses and general repairs
Chesapeake & Ohio R'y Co.	Passenger cars, freight cars, cabooses and general repairs
Steel Products Co.	Electric coal loaders
Huntington Stove and Foundry Co.	Stoves and castings
West Virginia Rail Co.	Light section steel rails, splices, bolts and spikes
H. R. Wyllie China Co.	Chinaware
West Virginia Stove and Foundry Co.	Stoves and castings
West Virginia Paved and Pressed Brick Co.	Pressed brick
Specialty Mattress Co.	Mattresses
Gwinn Bros. & Co.	Millers
Huntington Spring Bed Co.	Spring Beds, cots, etc.
Hewitt Lumber Co.	Lumber

Glass  
Keiste  
Wood-  
Hunti  
D. E.  
Centra  
Hunti  
Camp  
Stand  
Centra  
Hunti  
Blue  
Hunti  
Colum  
Cough  
Hunti  
Chas.  
Glads  
McCo  
Perry  
Fesen  
Hunti  
A. F.  
Ernes  
B. G.  
Centr  
Penn  
Agne  
Winn  
Tri-S  
Hunt  
Hunt  
Arms  
Fult  
Prin  
Mint  
Dun  
Ligg  
Lam  
Ashl  
Saks  
Clin  
H. I  
Voeg  
Was  
Hun  
Unit  
Crav  
Mill  
Star  
B. I  
Wes  
Sup  
Ray  
Hur  
Mot  
Amo  
McF  
Inte  
For  
Hun

## MORE OF THE THINGS WE MAKE, AND WHO MAKES 'EM

NAME	PRODUCT
Glass Brick Co.	Glass Brick
Keister Milling Co.	Millers
Wood-Mosaic Co.	Veneer manufacturers
Huntington Tumbler Co. ✓	Tumblers, lead blown and stem ware
D. E. Abbott & Co. ✓	Portraits and frames
Central City Bung Co. ✓	Bungs
Huntington Roofing & Tile Co. ✓	Clay shingles
Camp Glass Co. ✓	Window glass
Standard Ultramarine Co. ✓	Ultramarine blues, pinks and bluing
Central Glass Co. ✓	Plate glass and store front construction
Huntington Seating Co. ✓	Church furniture
Blue Jay Mfg. Co. ✓	Overalls and jumpers
Huntington Sash, Door and Trim Co. ✓	Sash, doors and trims
Columbia Gas Stove Co. ✓	Gas stoves
Coughenour Boiler Co. ✓	Boilers and repairs
Huntington Hogshead & Specialty Co. ✓	Tobacco hogsheads and fruit crates
Chas. Boldt Co. ✓	Bottles
Gladstone Mattress Co. ✓	Mattresses
McColm Granite Co. ✓	Marble works and monuments
Perry-Norvell Shoe Co. ✓	Men and women's shoes
Fesenmeier Packing Co. ✓	Meat packers
Huntington Tent & Awning Co. ✓	Tents and awnings
A. F. Thompson Mfg. Co. ✓	Bunson burner heating stoves and ranges
Ernest Hodges ✓	Masonic aprons
B. G. Cain ✓	Wagons and truck work
Central States Granite Co. ✓	Monumental work
Penn Table Co. ✓	Dining room tables
Agnew Hat Co. ✓	Hats
Winner Gas Stove Co. ✓	Gas stoves
Tri-State Sausage & Provision Co. ✓	Sausages and meats
Huntington Boiler Works ✓	Boilers and repairs
Huntington Iron Works ✓	Fabricators and ornamental iron work
Armstrong Mfg. Co., formerly Standard Stamping Co. ✓	Electrical stoves
Fulton Tool Works ✓	Mining machinery
Princeton Broom Co. ✓	Brooms
Minter Homes Corporation ✓	Ready-cut-houses
Duncan Box & Lumber Co. ✓	Wooden boxes
Liggett & Myers Tobacco Co. ✓	Tobacco
Lamie Chemical Co. ✓	Dyes
Ashland Paint Co. ✓	Paint
Saks Stamping Co. ✓	Hospital enamelware
Climax Rubber Co. ✓	Inner tubes
H. L. Huff Mfg. Co. ✓	Candy
Voegele & Dinning Co. ✓	Candy
Washington Mfg. Co. ✓	Clothing—boys' knickerbockers
Huntington Architectural Stone Co. ✓	Building stone
United States Chain & Forging Co. ✓	Chain
Cravens-Green Co. ✓	Picture moulding
Miller Casket Co. ✓	Burial caskets
Star Car & Foundry Co. ✓	Mine cars
B. L. P. Fibre Mfg. Co. ✓	Fibre furniture
West Virginia Glass Mfg Co. ✓	Food containers
Superior Glass Products Co. ✓	Window glass and specialties
Raymond Hoy & Company ✓	Fibre furniture
Huntington Packing Co. ✓	Meat packers
Motion Sign Co. ✓	Advertising Signs
American Thermos Bottle Co. ✓	Thermos bottles
McKenev Nut & Candy Co. ✓	Nuts and candy
International Nickel Co. ✓	Monel metal, sheets and rods
(Under construction)	
Fordlette Engine Co. ✓	Gas engines
(Under construction)	
Huntington Fixture & Refrigerating Co. ✓	Refrigerators and office furniture

*EVEN OUR OLD FRIEND OPPORTUNITY HAS LOCATED HERE*

---

**OPPORTUNITY**

Master of Human Destinies am I,  
Fame, Love, and Fortune on my footsteps wait,  
Cities and Fields I walk; I penetrate  
Deserts and seas remote, and passing by,  
Hovel and mart and palace, soon or late  
I knock unbidden once at every gate;  
If sleeping, wake; if feasting, rise before  
I turn away. It is the hour of fate,  
And they who follow me reach every state,  
Mortals desire, and conquer every foe  
Save Death; but those who doubt or hesitate,  
Condemned to failure, penury, and woe,  
Seek me in vain, and uselessly implore.  
I answer not, and I return no more.

—John J. Ingalls.

**NOTICE TO THE PUBLIC**

**Change of Policy**

For the convenience of those who wish to seek me, and on account of the central location of this point, I have established my permanent headquarters at Huntington, West Virginia, where I can be reached at all times.

Daily office hours as follows:

7 A. M. to 6:59 P. M.

7 P. M. to 6:59 A. M.

Those wishing to reach me can do so by appointment by addressing The Secretary Chamber of Commerce, Huntington, West Virginia.

Yours for Service,

**OPPORTUNITY.**

## FRIENDLINESS PREVAILS IN HUNTINGTON

## "THE HOUSE BY THE SIDE OF THE ROAD"

There are hermit souls that live withdrawn  
In the place of their self-content;  
There are souls like stars that dwell apart  
In the fellowless firmament;  
There are pioneer souls that blaze a path  
Where highways never ran.  
Let me live in the house by the side of the road  
And be a friend to man.

Let me live in a house by the side of the road  
Where the race of men go by—  
The men that are good, the men that are bad,  
As good and as bad as I.  
Then why should I sit in the scorner's seat,  
Or hurl the cynic's ban?  
Let me live in a house by the side of the road  
And be a friend to man.

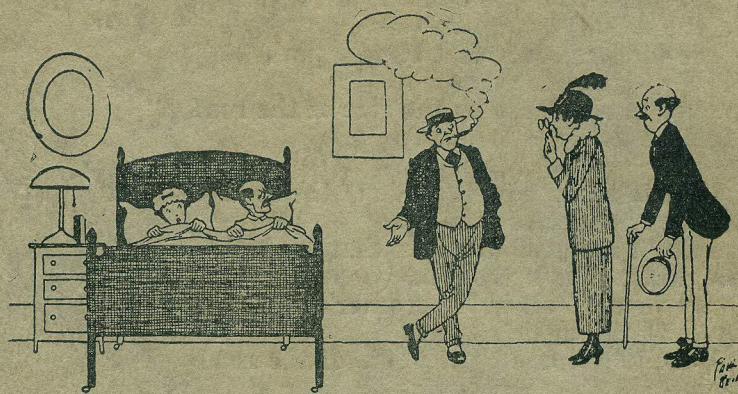
I see from my house by the side of the road,  
By the side of the highway of life,  
The men that press on with the ardor of hope  
And the men that are faint with the strife.  
And I turn not away from their smiles and their tears—  
Both part of an Infinite plan.  
Let me live in a house by the side of the road  
And be a friend to man.

I know there are brook-gladdened meadows ahead,  
And mountains of wearisome height,  
That the road stretches through the long afternoon  
And passes away to the night.  
Yet still I rejoice when the travelers rejoice,  
And weep with the strangers that moan;  
Nor live in my house by the side of the road  
Like a man that lives alone.

Let me live in a house by the side of the road,  
Where the race of men go by.  
They are good, they are bad, they are weak, they are strong,  
Wise, foolish; so am I.  
Then why should I sit in the scorner's seat  
Or hurl a cynic's ban?  
Let me live in a house by the side of the road  
And be a friend to man.

—Samuel Walter Foss

*When You're a Tenant in a House That's for Sale*



Real Estate Agent—Here's another large, sunny room used at present, I believe,  
as a bedroom. —Judge.

*Moral—"Own Your Own Home"*

## AZEL MEADOWS

The Real Estate Man Builds  
One New Home Each Week

*Sold on Easy Terms*

421 Ninth Street

Huntington, West Virginia

9294

L